

**avinash**  
a relation for life

**Avinash Metropolis**

Khoka - Junwani Road, Bhilai  
RERA Reg. No.: PCGRERA290819001030  
rera.cgstate.gov.in

Website : [www.avinashgroup.com](http://www.avinashgroup.com)  
Email : [sales.metropolis@avinashgroup.com](mailto:sales.metropolis@avinashgroup.com)

**Contact no. 93990 22738 / 93990 22730**

FOLLOW US ON  
@avinashgroup



IT'S TIME TO RISE.



...TO THE HIGH LIFE

**avinash**  
**METROPOLIS**

**2-3-4 BHK FLATS & PENTHOUSES**

**Near Milestone School Kohka - Junwani Raod, Bhilai**



# Colonial Architecture

## Luxury in the Heart of Bhilai !

At Avinash Metropolis, all the luxuries of urban life come together to give you the fine living experience you've been dreaming of all along!

441 Apartments In 2 Phases | 10 Blocks | 2, 3 & 4 BHK

GRAND CLUB

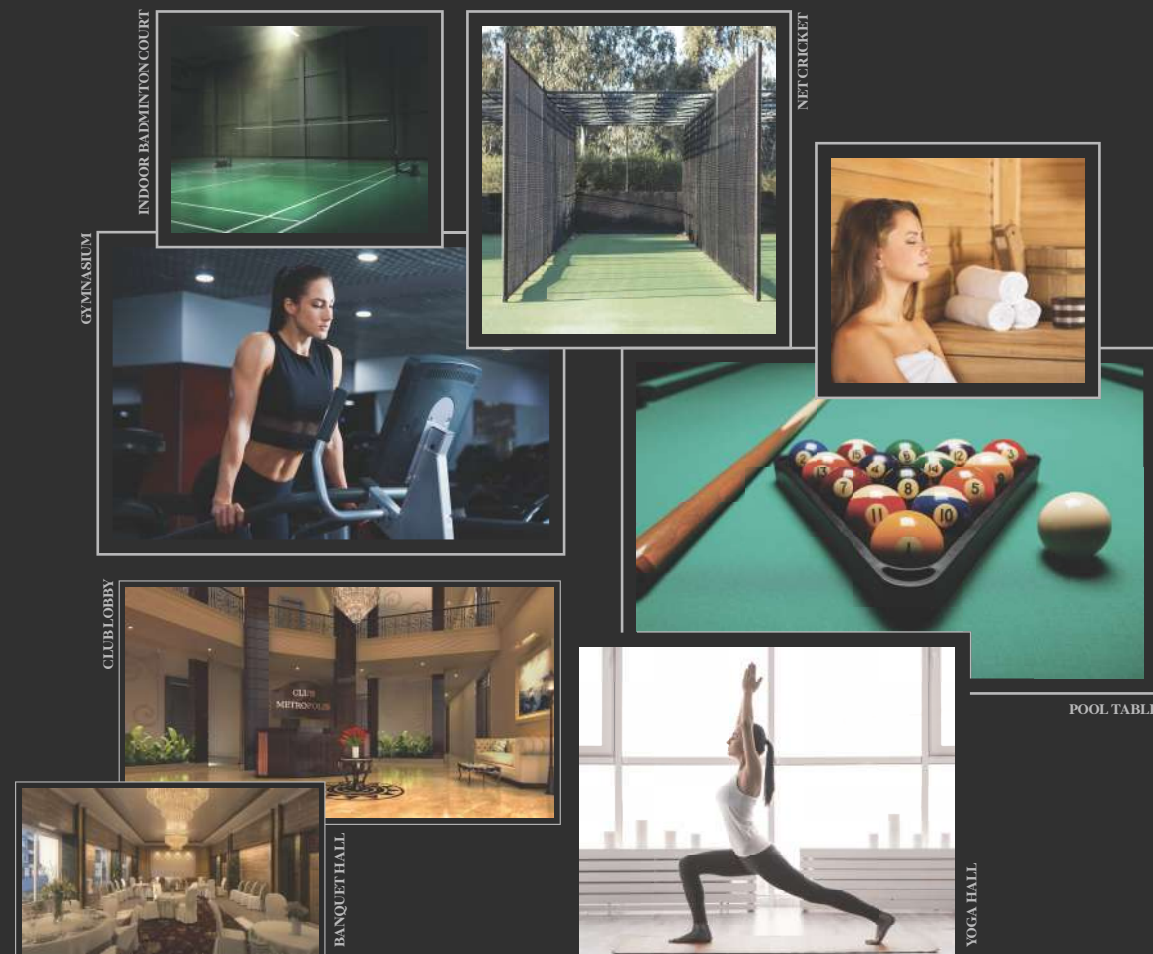


POOL VIEW



AT CLUB METROPOLIS, EVERYDAY IS CHERISHED WITH THE FINEST FACILITIES AND FEATURES

CLUB METROPOLIS



- SWIMMING POOL
- GYMNASIUM
- STEAM BATH
- INDOOR BADMINTON COURT
- NET CRICKET
- POOL TABLE
- TABLE TENNIS
- YOGA HALL
- 4 GUEST ROOM
- TEMPLE
- KIDS PLAY AREA
- SENIOR CITIZEN GARDEN
- BANQUET WITH LAWN
- LANDSCAPE GARDENS
- CAR WASH AREA
- RAINWATER HARVESTING



## THE NEW LANDMARK OF BHILAI

Luxury Apartment & Penthouse

P+7 Floors

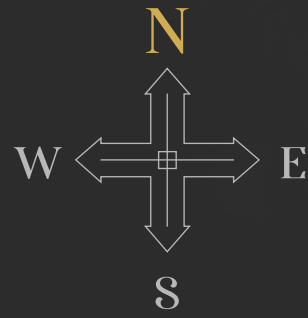
### SITE PLAN





# Site Plan

## BLOCK - A & B

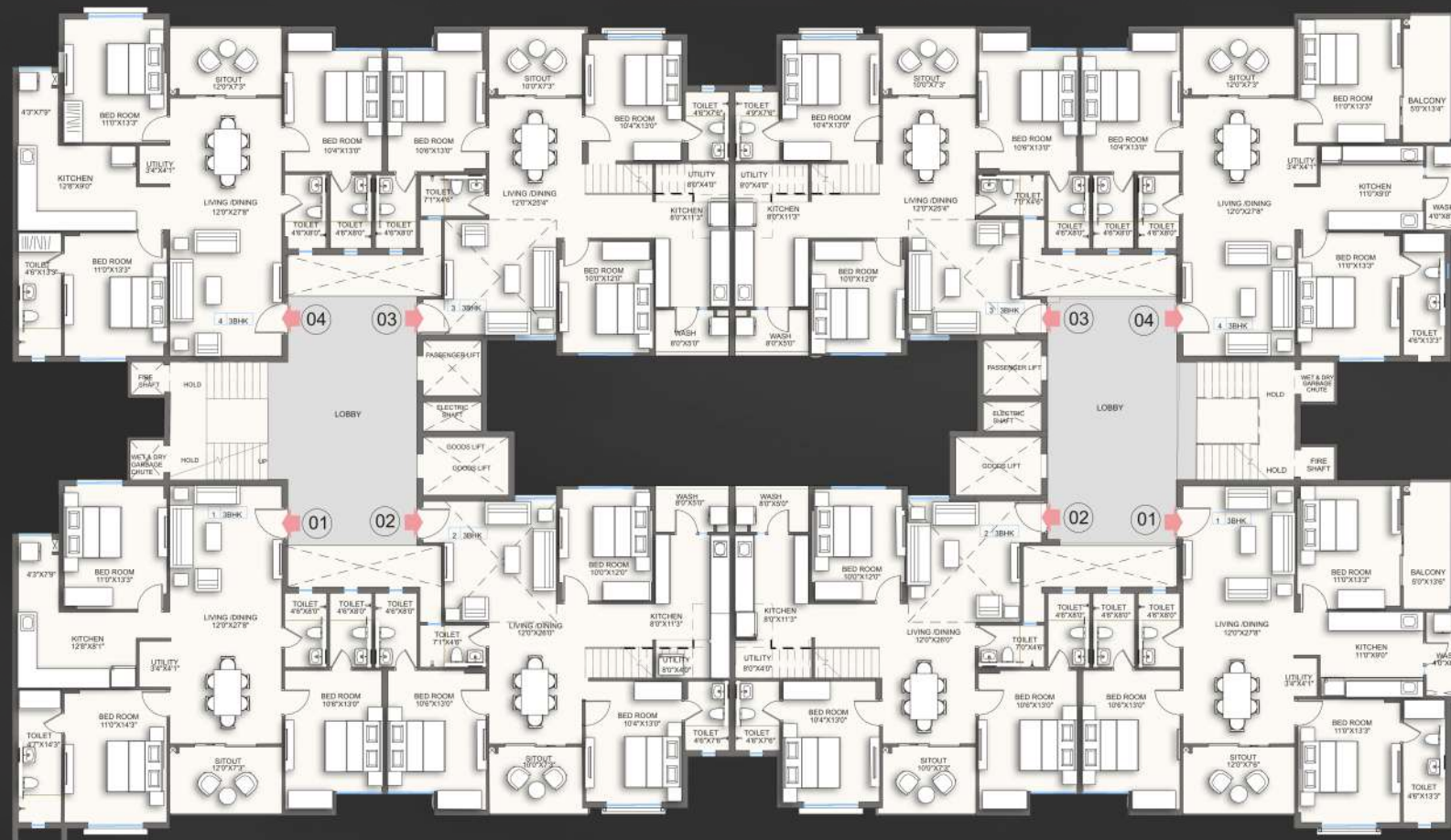


B BLOCK | 1<sup>ST</sup> TO 6<sup>TH</sup> FLOOR

FLAT	TYPE	CARPET	WASH	BALCONY	RERA CARPET	UNIT
1	3BHK	1077	30	88	1195	SQFT
2	3BHK	1019	37	74	1130	SQFT
3	3BHK	1019	37	74	1130	SQFT
4	3BHK	1077	30	88	1195	SQFT

A BLOCK | 1<sup>ST</sup> TO 6<sup>TH</sup> FLOOR

FLAT	TYPE	CARPET	WASH	BALCONY	RERA CARPET	UNIT
1	3BHK	1053	36	159	1248	SQFT
2	3BHK	1019	37	74	1130	SQFT
3	3BHK	1019	37	74	1130	SQFT
4	3BHK	1053	36	159	1248	SQFT

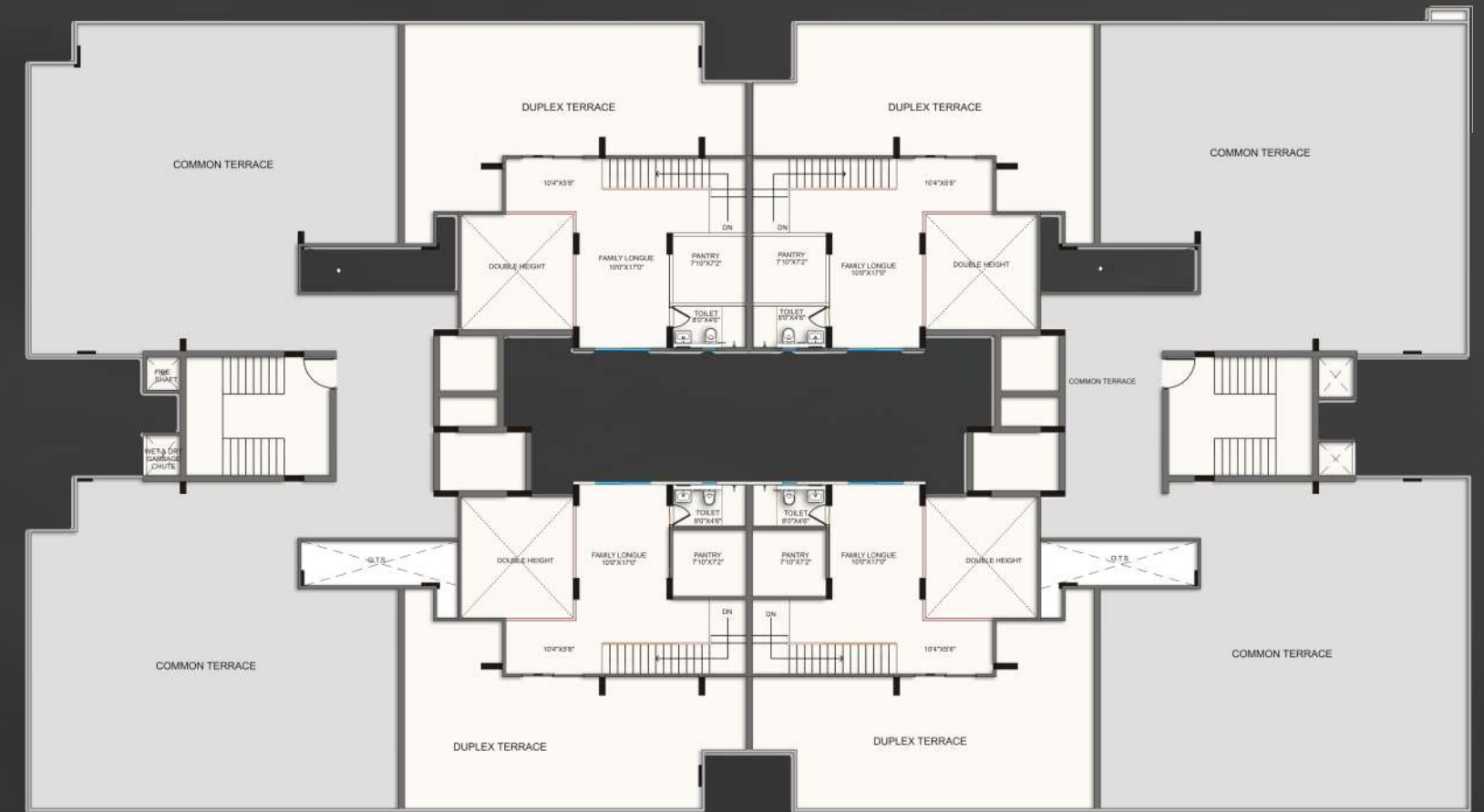


B BLOCK | PENTHOUSE LOWER

FLAT	TYPE	CARPET	WASH	BALCONY	RERA CARPET	UNIT
1	3BHK	1077	30	88	1195	SQFT
2	3BHK	1019	37	74	1130	SQFT
PENTHOUSE	412			600 (TERRACE)		SQFT
3	3BHK	1019	37	74	1130	SQFT
PENTHOUSE	412			600 (TERRACE)		SQFT
4	3BHK	1077	30	88	1195	SQFT

A BLOCK | PENTHOUSE LOWER

FLAT	TYPE	CARPET	WASH	BALCONY	RERA CARPET	UNIT
1	3BHK	1053	36	159	1248	SQFT
2	3BHK	1019	37	74	1130	SQFT
PENTHOUSE	412			600 (TERRACE)		SQFT
3	3BHK	1019	37	74	1130	SQFT
PENTHOUSE	412			600 (TERRACE)		SQFT
4	3BHK	1053	36	159	1248	SQFT



B BLOCK | PENTHOUSE TERRACE

FLAT	TYPE	CARPET	WASH	BALCONY	RERA CARPET	UNIT
1	3BHK	1077	30	88	1195	SQFT
2	3BHK	1019	37	74	1130	SQFT
PENTHOUSE	412			600 (TERRACE)		SQFT
3	3BHK	1019	37	74	1130	SQFT
PENTHOUSE	412			600 (TERRACE)		SQFT
4	3BHK	1077	30	88	1195	SQFT

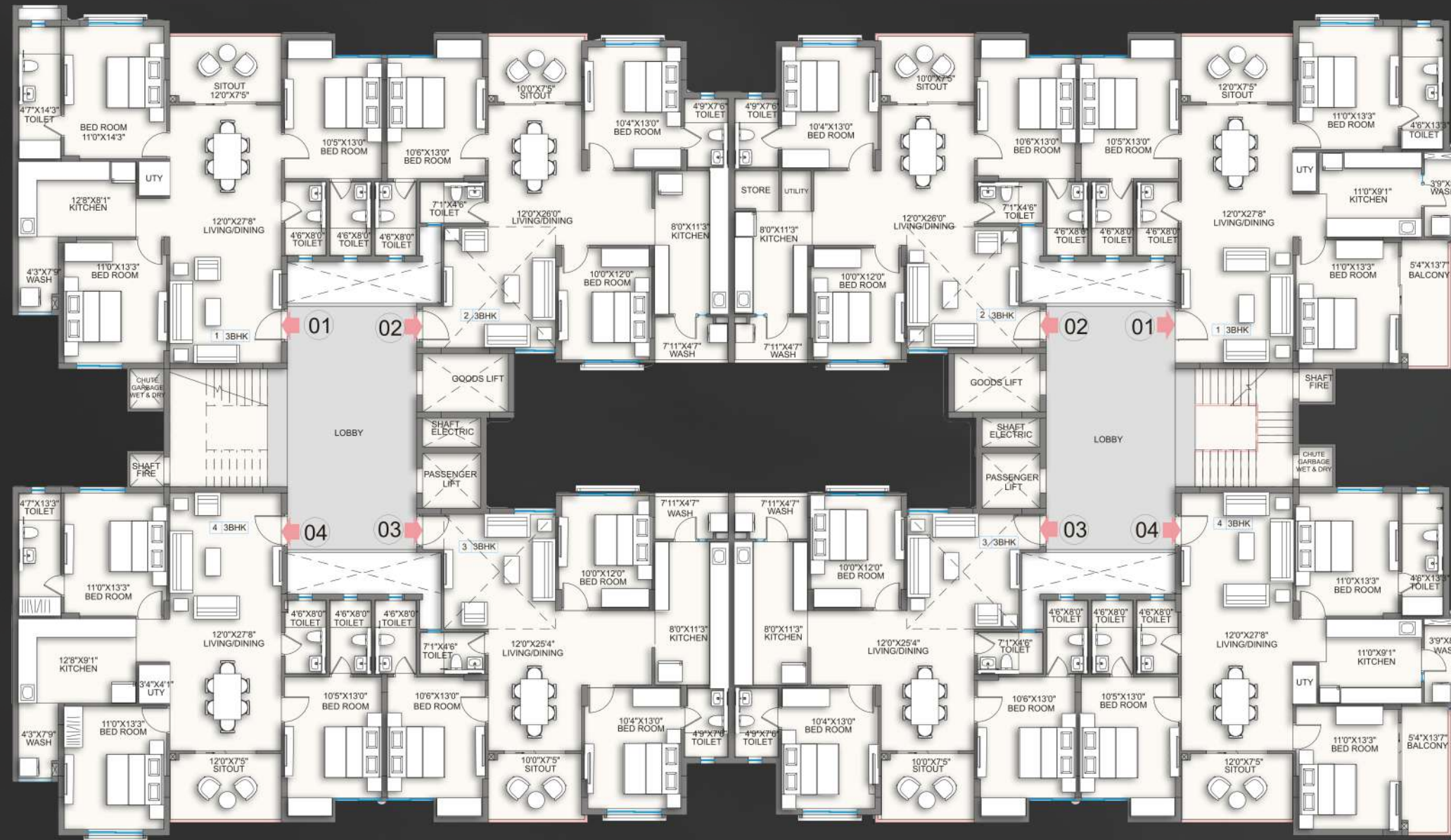
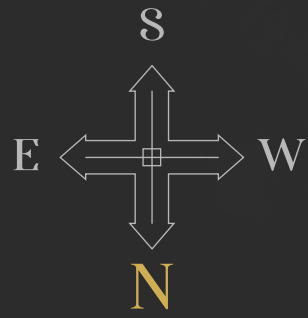
A BLOCK | PENTHOUSE TERRACE

FLAT	TYPE	CARPET	WASH	BALCONY	RERA CARPET	UNIT
1	3BHK	1053	36	159	1248	SQFT
2	3BHK	1019	37	74	1130	SQFT
PENTHOUSE	412			600 (TERRACE)		SQFT
3	3BHK	1019	37	74	1130	SQFT
PENTHOUSE	412			600 (TERRACE)		SQFT
4	3BHK	1053	36	159	1248	SQFT



# Site Plan

## BLOCK - C & D

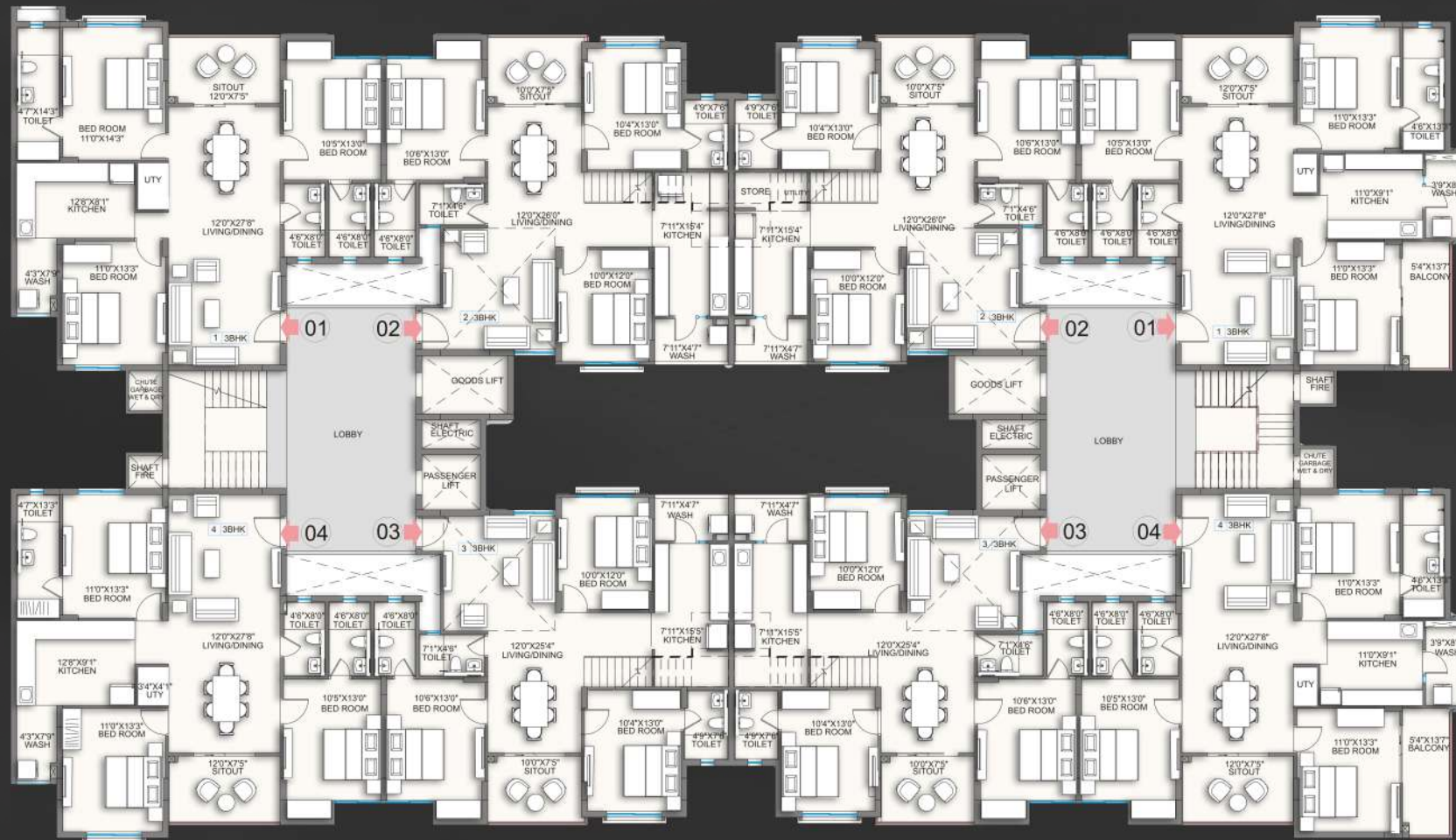


C BLOCK | 1<sup>ST</sup> TO 6<sup>TH</sup> FLOOR

FLAT	TYPE	CARPET	WASH	BALCONY	RERA CARPET	UNIT
1	3BHK	1077	30	88	1195	SQFT
2	3BHK	1019	37	74	1130	SQFT
3	3BHK	1019	37	74	1130	SQFT
4	3BHK	1077	30	88	1195	SQFT

D BLOCK | 1<sup>ST</sup> TO 6<sup>TH</sup> FLOOR

FLAT	TYPE	CARPET	WASH	BALCONY	RERA CARPET	UNIT
1	3BHK	1053	36	159	1248	SQFT
2	3BHK	1019	37	74	1130	SQFT
3	3BHK	1019	37	74	1130	SQFT
4	3BHK	1053	36	159	1248	SQFT

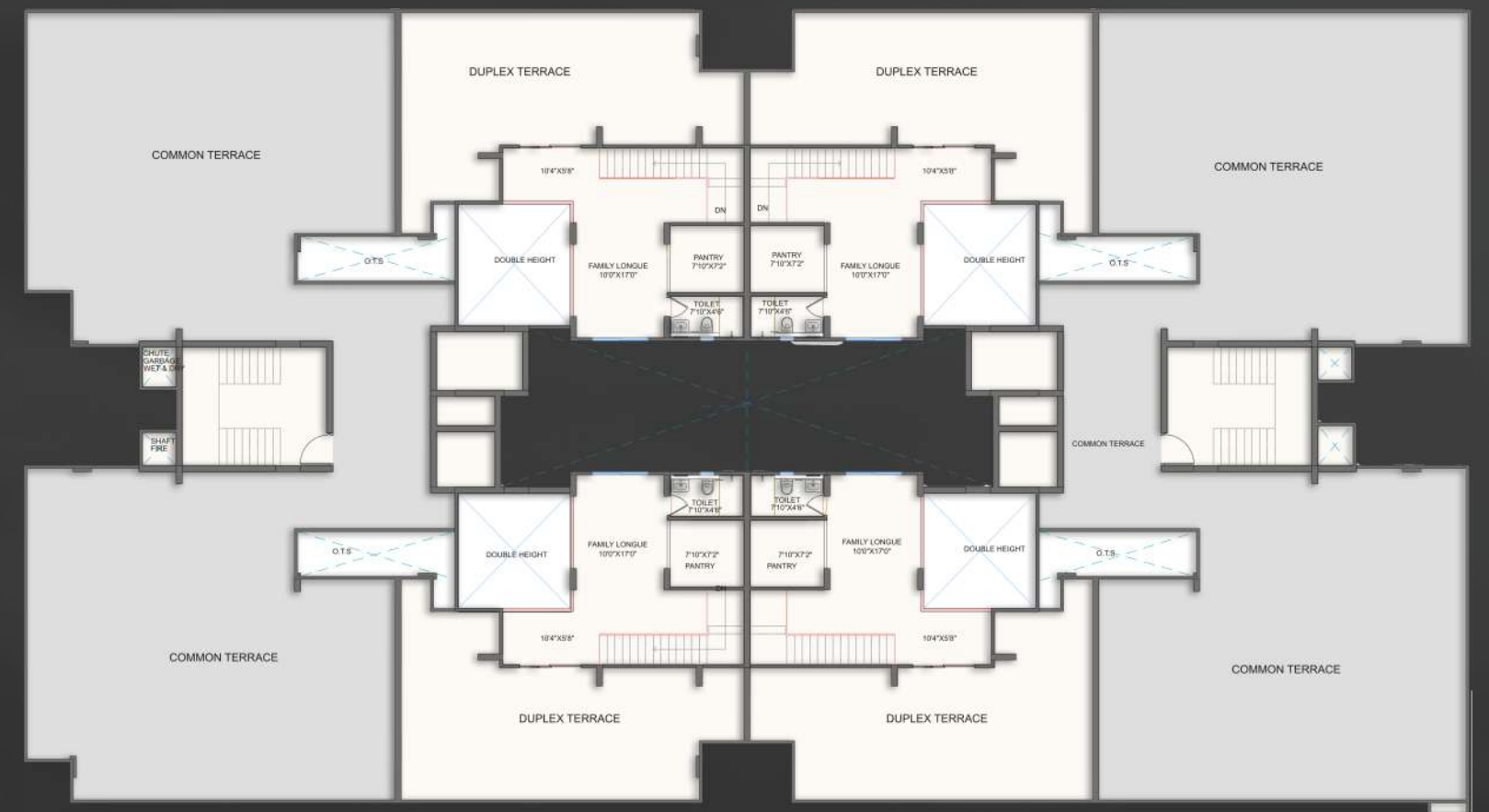


C BLOCK | PENTHOUSE LOWER

FLAT	TYPE	CARPET	WASH	BALCONY	RERA CARPET	UNIT
1	3BHK	1077	30	88	1195	SQFT
2	3BHK	1019	37	74	1130	SQFT
PENTHOUSE	4I2			600 (TERRACE)		SQFT
3	3BHK	1019	37	74	1130	SQFT
PENTHOUSE	4I2			600 (TERRACE)		SQFT
4	3BHK	1077	30	88	1195	SQFT

D BLOCK | PENTHOUSE LOWER

FLAT	TYPE	CARPET	WASH	BALCONY	RERA CARPET	UNIT
1	3BHK	1053	36	159	1248	SQFT
2	3BHK	1019	37	74	1130	SQFT
PENTHOUSE	4I2			600 (TERRACE)		SQFT
3	3BHK	1019	37	74	1130	SQFT
PENTHOUSE	4I2			600 (TERRACE)		SQFT
4	3BHK	1053	36	159	1248	SQFT



C BLOCK | PENTHOUSE TERRACE

FLAT	TYPE	CARPET	WASH	BALCONY	RERA CARPET	UNIT
1	3BHK	1077	30	88	1195	SQFT
2	3BHK	1019	37	74	1130	SQFT
PENTHOUSE	4I2			600 (TERRACE)		SQFT
3	3BHK	1019	37	74	1130	SQFT
PENTHOUSE	4I2			600 (TERRACE)		SQFT
4	3BHK	1077	30	88	1195	SQFT

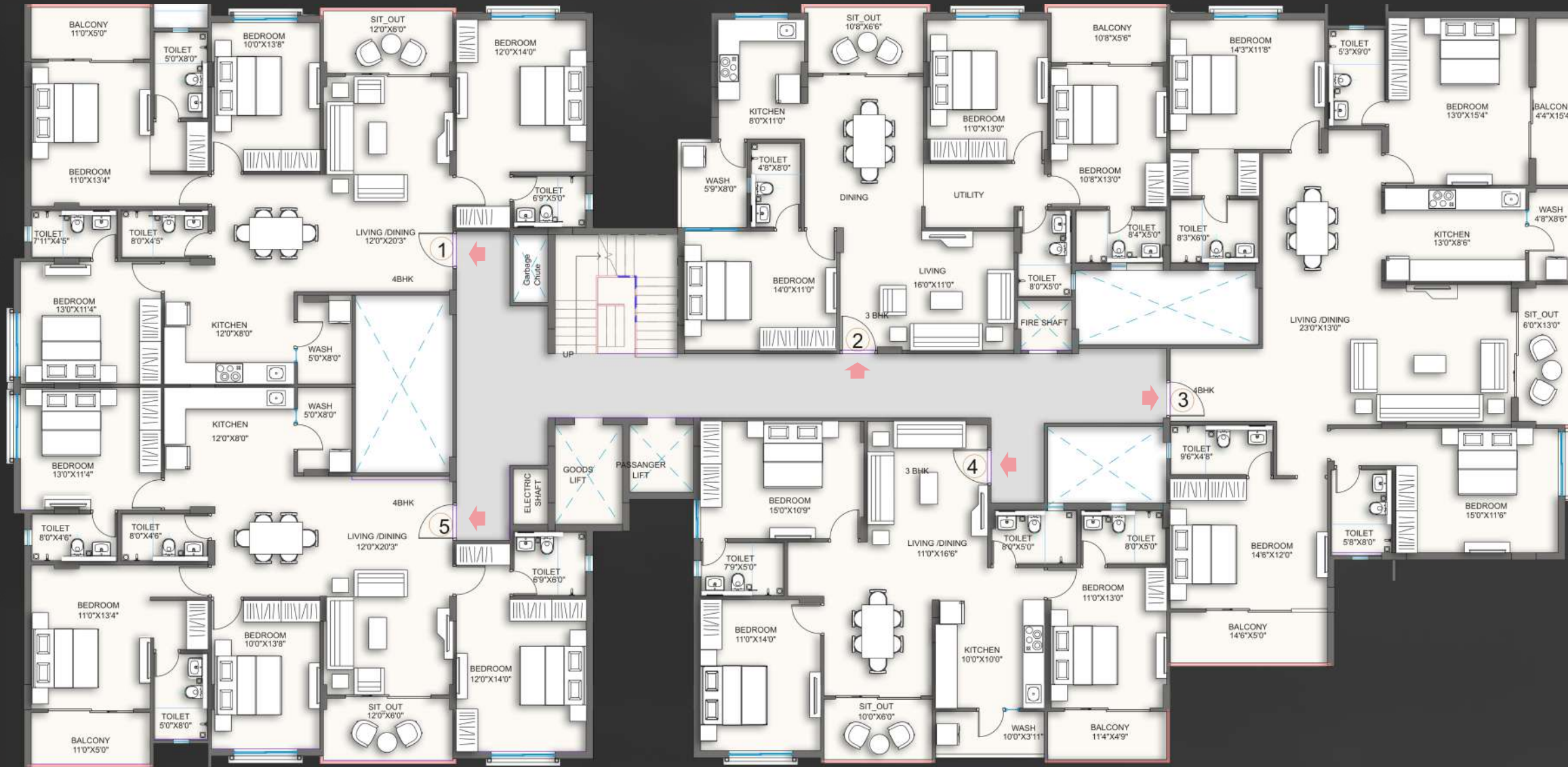
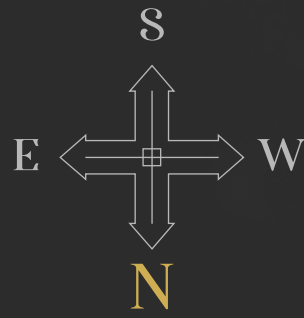
D BLOCK | PENTHOUSE TERRACE

FLAT	TYPE	CARPET	WASH	BALCONY	RERA CARPET	UNIT
1	3BHK	1053	36	159	1248	SQFT
2	3BHK	1019	37	74	1130	SQFT
PENTHOUSE	4I2			600 (TERRACE)		SQFT
3	3BHK	1019	37	74	1130	SQFT
PENTHOUSE	4I2			600 (TERRACE)		SQFT
4	3BHK	1053	36	159	1248	SQFT



# Site Plan

## BLOCK - E



E BLOCK | 1<sup>ST</sup> TO 6<sup>TH</sup> FLOOR

FLAT	TYPE	CARPET	WASH	BALCONY	RERA CARPET	UNIT
1	4BHK	1320	39	121	1478	SQFT
2	3BHK	1076	48	119	1243	SQFT
3	4BHK	1644	42	205	1891	SQFT
4	3BHK	1036	38	106	1180	SQFT
5	4BHK	1326	39	121	1486	SQFT



E BLOCK | PENTHOUSE LOWER

FLAT	TYPE	CARPET	WASH	BALCONY	RERA CARPET	UNIT
1	4BHK	1320	39	121	1478	SQFT
PENTHOUSE		212		1253 (TERRACE)		SQFT
2	3BHK	1076	48	119	1243	SQFT
PENTHOUSE		281		861 (TERRACE)		SQFT
3	4BHK	1644	42	205	1891	SQFT
PENTHOUSE		368		1401 (TERRACE)		SQFT
4	3BHK	1036		144	1180	SQFT
5	4BHK	1326	39	121	1486	SQFT
PENTHOUSE		212		1264 (TERRACE)		SQFT



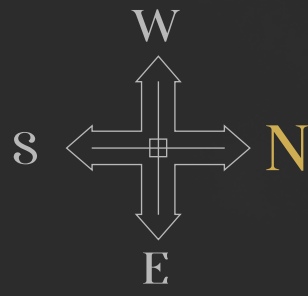
E BLOCK | PENTHOUSE TERRACE

FLAT	TYPE	CARPET	WASH	BALCONY	RERA CARPET	UNIT
1	4BHK	1320	39	121	1478	SQFT
PENTHOUSE		212		1253 (TERRACE)		SQFT
2	3BHK	1076	48	119	1243	SQFT
PENTHOUSE		281		861 (TERRACE)		SQFT
3	4BHK	1644	42	205	1891	SQFT
PENTHOUSE		368		1401 (TERRACE)		SQFT
4	3BHK	1036		144	1180	SQFT
5	4BHK	1326	39	121	1486	SQFT
PENTHOUSE		212		1264 (TERRACE)		SQFT



# Site Plan

## BLOCK - F



F BLOCK | 1<sup>ST</sup> TO 6<sup>TH</sup> FLOOR

FLAT	TYPE	CARPET	WASH	BALCONY	RERA CARPET	UNIT
1	2BHK	657	33	64	754	SQFT
2	2BHK	657	33	64	754	SQFT
3	2BHK	657	33	64	754	SQFT
4	4BHK	1586	31	196	1813	SQFT
5	3BHK	870	21	91	982	SQFT
6	2BHK	657	33	64	754	SQFT
7	2BHK	657	33	64	754	SQFT



F BLOCK | PENTHOUSE LOWER

FLAT	TYPE	CARPET	WASH	BALCONY	RERA CARPET	UNIT
1	2BHK	657	33	64	754	SQFT
2	2BHK	657	33	64	754	SQFT
3	2BHK	657	33	64	754	SQFT
4	4BHK	1586	31	196	1813	SQFT
PENTHOUSE		364		1448 (TERRACE)		SQFT
5	3BHK	870	21	91	982	SQFT
6	4BHK	1420	32	85	1537	SQFT
PENTHOUSE		239		1190 (TERRACE)		SQFT

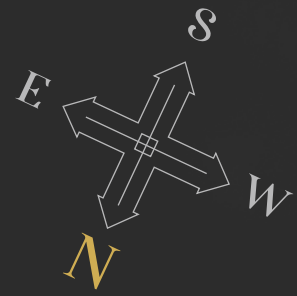


F BLOCK | PENTHOUSE TERRACE

FLAT	TYPE	CARPET	WASH	BALCONY	RERA CARPET	UNIT
4	4BHK	1586	31	196	1813	SQFT
PENTHOUSE		364		1448 (TERRACE)		SQFT
6	4BHK	1357	40	121	1518	SQFT
PENTHOUSE		239		1190 (TERRACE)		SQFT



# Site Plan



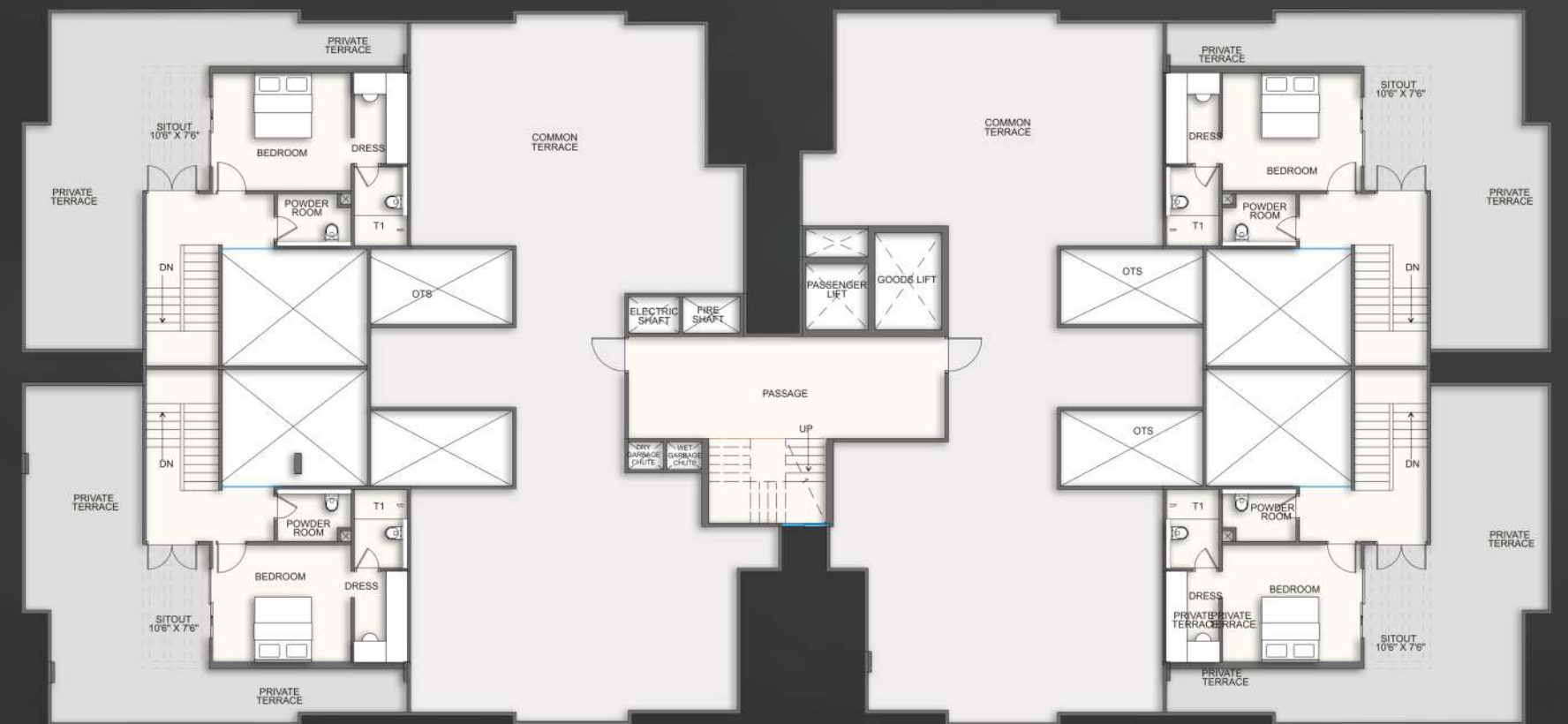
G BLOCK | 1<sup>ST</sup> TO 6<sup>TH</sup> FLOOR

FLAT	TYPE	CARPET	WASH	BALCONY	RERA CARPET	UNIT
1	3BHK	908	30	74	1012	SQFT
2	2BHK	650	28	59	737	SQFT
3	2BHK	648	46	61	755	SQFT
4	3BHK	908	30	74	1012	SQFT
5	3BHK	908	30	74	1012	SQFT
6	2BHK	653	28	61	742	SQFT
7	2BHK	650	28	59	737	SQFT
8	3BHK	908	30	74	1012	SQFT



G BLOCK | PENTHOUSE LOWER

FLAT	TYPE	CARPET	WASH	BALCONY	RERA CARPET	UNIT
1	3BHK	1000	30	74	1104	SQFT
PENTHOUSE	414	448 (TERRACE)				SQFT
2	2BHK	650	28	59	737	SQFT
3	2BHK	648	46	61	755	SQFT
4	3BHK	908	30	74	1012	SQFT
PENTHOUSE	414	448 (TERRACE)				SQFT
5	3BHK	908	30	74	1012	SQFT
PENTHOUSE	414	448 (TERRACE)				SQFT
6	2BHK	653	28	61	742	SQFT
7	2BHK	650	28	59	737	SQFT
8	3BHK	908	30	74	1012	SQFT
PENTHOUSE	414	448 (TERRACE)				SQFT

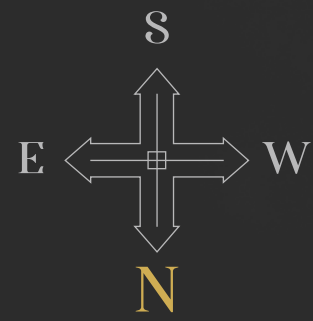


G BLOCK | PENTHOUSE TERRACE

FLAT	TYPE	CARPET	WASH	BALCONY	RERA CARPET	UNIT
1	3BHK	1000	30	74	1104	SQFT
PENTHOUSE	414	448 (TERRACE)				SQFT
2	2BHK	650	28	59	737	SQFT
3	2BHK	648	46	61	755	SQFT
4	3BHK	908	30	74	1012	SQFT
PENTHOUSE	414	448 (TERRACE)				SQFT
5	3BHK	908	30	74	1012	SQFT
PENTHOUSE	414	448 (TERRACE)				SQFT
6	2BHK	653	28	61	742	SQFT
7	2BHK	650	28	59	737	SQFT
8	3BHK	908	30	74	1012	SQFT
PENTHOUSE	414	448 (TERRACE)				SQFT



# Site Plan



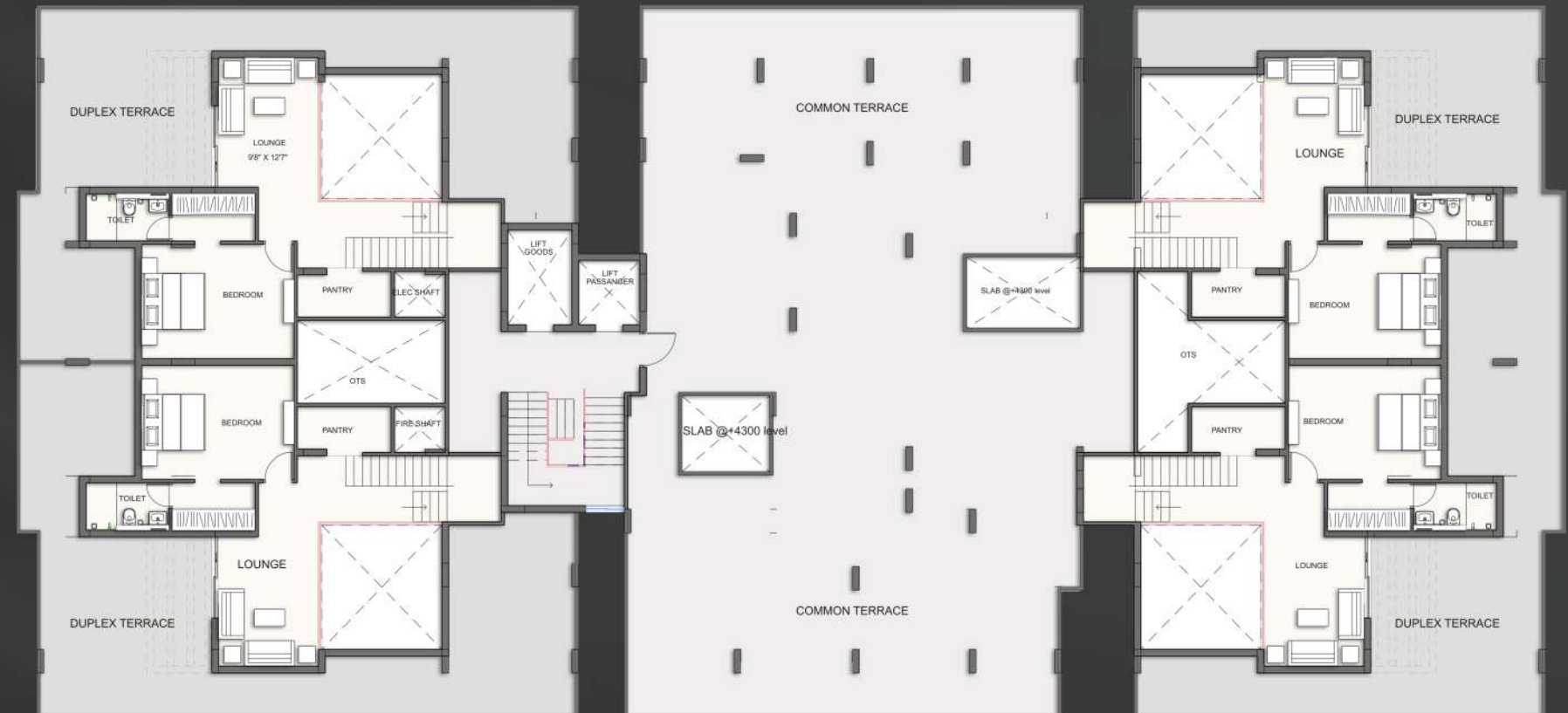
I BLOCK | 1<sup>ST</sup> TO 6<sup>TH</sup> FLOOR

FLAT	TYPE	CARPET	WASH	BALCONY	RERA CARPET	UNIT
1	4BHK	1303	42	129	1474	SQFT
2	3BHK	1033	37	127	1275	SQFT
3	3BHK	1058	42	129	1229	SQFT
4	3BHK	1058	42	129	1229	SQFT
5	3BHK	995	38	115	1148	SQFT
6	4BHK	1310	42	129	1481	SQFT



I BLOCK | PENTHOUSE LOWER

FLAT	TYPE	CARPET	WASH	BALCONY	RERA CARPET	UNIT
1	4BHK	1303	42	129	1474	SQFT
PENTHOUSE		564		83 (TERRACE)		SQFT
2	3BHK	1033	37	127	1275	SQFT
3	3BHK	1058	42	129	1229	SQFT
PENTHOUSE		563		83 (TERRACE)		SQFT
4	3BHK	1058	42	129	1229	SQFT
PENTHOUSE		563		83 (TERRACE)		SQFT
5	3BHK	995	42	129	1148	SQFT
6	3BHK	1310	42	129	1481	SQFT
PENTHOUSE		563		83 (TERRACE)		SQFT



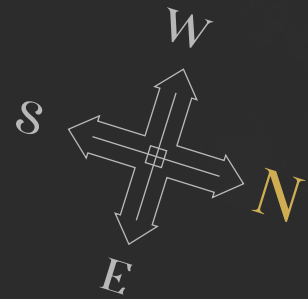
I BLOCK | PENTHOUSE LOWER

FLAT	TYPE	CARPET	WASH	BALCONY	RERA CARPET	UNIT
1	4BHK	1303	42	129	1474	SQFT
PENTHOUSE		564		83 (TERRACE)		SQFT
2	3BHK	1033	37	127	1275	SQFT
3	3BHK	1058	42	129	1229	SQFT
PENTHOUSE		563		83 (TERRACE)		SQFT
4	3BHK	1058	42	129	1229	SQFT
PENTHOUSE		563		83 (TERRACE)		SQFT
5	3BHK	995	42	129	1148	SQFT
6	3BHK	1310	42	129	1481	SQFT
PENTHOUSE		563		83 (TERRACE)		SQFT



# Site Plan

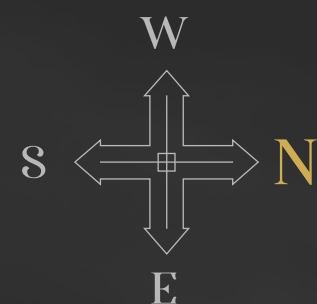
## BLOCK - H



H BLOCK | 1<sup>ST</sup> TO 7<sup>TH</sup> FLOOR

FLAT	TYPE	CARPET	WASH	BALCONY	RERA CARPET	UNIT
1	3BHK	906	30	74	1010	SQFT
2	2BHK	650	27	60	737	SQFT
3	2BHK	650	47	60	757	SQFT
4	3BHK	892	30	74	996	SQFT
5	3BHK	892	30	74	996	SQFT
6	2BHK	650	27	60	737	SQFT
7	2BHK	650	27	60	737	SQFT
8	3BHK	906	30	74	1010	SQFT

## BLOCK - J



J BLOCK | 1<sup>ST</sup> TO 7<sup>TH</sup> FLOOR

FLAT	TYPE	CARPET	WASH	BALCONY	RERA CARPET	UNIT
1	3BHK	942	33	78	1053	SQFT
2	2BHK	657	33	64	754	SQFT
3	2BHK	657	33	64	754	SQFT
4	3BHK	855	33	78	965	SQFT
5	3BHK	855	33	78	965	SQFT
6	2BHK	657	33	64	754	SQFT
7	2BHK	657	33	64	754	SQFT
8	2BHK	657	33	64	754	SQFT



## LOCATION MAP



Milestone School - 300 Mtrs \* Surya T1 Mall - 800 Mtrs \* DPS Durg - 3 Kms \* KPS School - 2 Kms \* Rungta Eng. College - 4 Kms \* Hotel Grand Dhillon - 3 Kms \* Chandulal Chandrakar Hospital - 3 Kms  
 Shankaracharya Nursing College - 1.8 Kms \* Shankaracharya Eng. College - 2.5 Kms \* Software Technolog Park - 2 Kms \* Rungta Dental College - 4 Kms \* IIT Bhilai - 5 Kms  
 Shankaracharya Medical College - 2.8 Kms \* Bhilai Ngr Rail. Station - 4 Kms \* Bhilai Steel Plant - 6.5 Kms

## 360 DEGREE CONVINIENCES

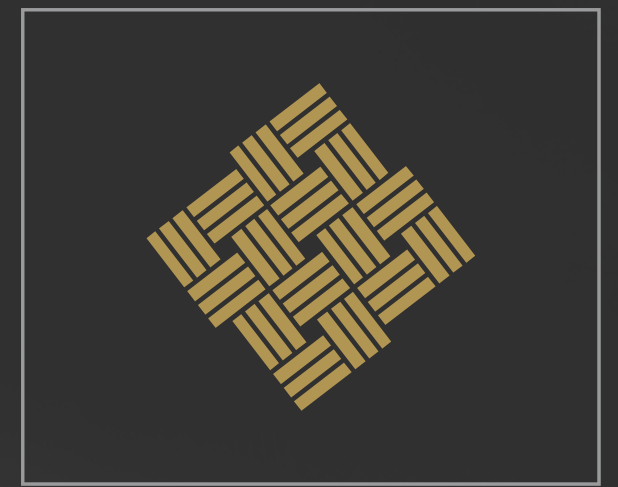


### FLOORING

2'x2' vitrified tiles neno polish in hall, bedroom and kitchen floor.

Rustic ceramic tiles in balcony and wash area.

Combination of vitrified tiles / granite in stairs, lobby and common area.



### WINDOW

Three-track aluminium section sliding with mosquito net.

### LIFT

Each building-2 lifts with passenger & stretcher lifts (service).



### DOORS

Main door-wood frame and water proof door (veneer finished) with mortise lock.

Other Doors-Designer masonite / laminated withround lock with RCC door frame.

### KITCHEN

Granite platform top compatible for modular kitchen.

Steel sink with mixture.

Ceramic tile dado up to 2'.

Electrical points for refrigerator, chimney, water purifier, micro-wave and mixer.

### TOILETS

Glazed ceramic tiles dado up to 7' height.

Single lever diverter in shower area.

Wall mounted WC and wash basin of reputed make.

Electrical point for geyser, exhaust fan and mirror light.

### SECURITY

Fire fighting as per norms.

CCTV camera at entrance gate & common area.

Intercom system connected with guard room.



### WALL FINISHES

Cement base putty finish in all interior walls.

Weather proof emulsion paint in exterior walls.



### ELECTRICAL

Electrical points as per furniture layout.

Telephone, TV power point in living rooms.

Power point for A.C. in all rooms.

Fire retardant cable and modular switches of reputed brands.

Power backup of common area.

SPECIAL OFFER