

Where every  
moment of life is  
**INCOMPARABLE**  
**UNFORGETTABLE**  
**UNSTOPPABLE**

**avinash**  
**ATULYA**

**1-2-3 BHK APARTMENTS**

NEAR SURYA COLLEGE, GEEDAM ROAD, JAGDALPUR

**avinash**  
a relation for life

# Avinash Group Now in Jagdalpur

The fastest growing city of Chhattisgarh, the administrative headquarter of Bastar and the promising Industrial Hub of future, **Jagdalpur** is in fact the city of unlimited possibilities. It is famous for natural splendor of green mountains, deep valleys, dense forests, waterfalls, caves, parks, monuments, natural resources, exuberant festivity, peaceful seclusion and rich tribal heritage.

This city is also evolving rapidly in infrastructural development. Its multiple potential has made it a centre of attraction throughout the nation.

We, **Avinash Group** are well known as the **Most Trusted Real Estate Company of Chhattisgarh** since past 24 years and with such strong credibility we are now landing at **Jagdalpur** to contribute in Jagdalpur's development. '**Avinash Atulya**' is one of our best residential projects which ensures to add new dimensions to the growth of Jagdalpur. The spirit of creativity, perfection and conscience reflect in this project. We welcome you to step in and experience the majesty of **Avinash Atulya**.



13000 HAPPY &  
SATISFIED FAMILIES

1 CRORE SQFT  
CONSTRUCTION COMPLETED

90 LAKHS SQFT  
CONSTRUCTION IN PROGRESS

80 LAKHS SQFT  
CONSTRUCTION IN PLANNING

56 LANDMARK PROJECTS

ONE NAME

**avinash**

**avinash**  
a relation for life

Avinash Group is a name to beckon upon in Central India when it comes to Trust, Transparency, Innovation, Quality & Timely Delivery. Since its inception in 1996, company has grown as one of the most awarded companies in the country for its various pioneering projects. The journey over the last two decades has seen laurels in both residential & commercial domains. In such a competitive environment, the Avinash Group has managed to maintain its position as one of the most trusted name not only in Chhattisgarh but in the Central India as well. This is evident from the numerous national awards and accolades which are received over the years.

Group has revolutionized scenario of construction and development of residential complexes, shops, integrated township, business park, shopping mall/multiplexes in Chattisgarh State through innovation, planning and design, winning strategies and pleasing business management. The group has maintained the highest level of professionalism integrity and transparency from the very beginning by which the brand name of Avinash Group has become synonymous to trust, reliability and noteworthy across the country. All residential constructions are aimed for all segments of the society based on value for money.

★★★★ AWARDS ★★★★★



Avinash Pride  
Best Project in LIG Category  
PMAY Empowering India Awards 2019



Anand Singhania - MD, Avinash Group  
Most Reputed Real Estate Entrepreneur  
Chhattisgarh  
Grohe HURUN 2018



Avinash Group  
Conservation & Plantation-CSR  
Award 2019



Avinash New County  
ASIA's 100 Best Awarded Projects  
2014-15



Avinash Group  
Woman Empowerment & Gender Equity  
CSR Award 2017



Avinash Group  
Best Commercial Developer of Central India  
National Awards 2010



Club Paraiso  
The Best Club House  
Real Estate Achievers Award 2015



Magneto The Mall  
Best Commercial Property in Eastern Region  
CNBC Awaaz-CREDAI Real Estate Awards 2010



Maruti Solitaire  
Chhattisgarh's 1st Certified Green Building  
4 Star GRIHA Certified Project (TERI)



Maruti Lifestyle  
6 Star Rated Project in Central India  
CRISIL 6 STAR RATING



Welcome to a place where one can live an opulent life. **Atulya** means incomparable, and proving its name true, this place is unmatched that surely keeps you away from the mundane. Your luxury home will uplift your image by giving you an unforgettable address where each moment will be cherished.

**Ultramodern 1-2-3 BHK Flats**

# A gateway to an oasis of luxury





Unlike ordinary apartment projects, **Avinash Atulya** is the result of intricate research in customer preferences and aspiration. Identifying the needs for exclusive dwellings Avinash Group conceptualized '**Atulya**', one of a kind project in Jagdalpur, which blends the best features of apartments.

Right from the location to design, everything about **Avinash Atulya** is exclusive. Atulya will position you in the heart of high society and give your life a distinct sheen. Each unit here comes with unparalleled features and amenities for luxury living. Come & discover what makes Atulya so special.

# An exquisite lifestyle awaits you



# Highest standards of living



School  
5 Mins Drive



Hospital  
8 Mins Drive



Shopping Malls  
10 Mins Drive



Hotel & Restaurants  
8 Mins Drive



Bank & ATM  
5 Mins Drive



Bus Stand  
8 Mins Drive



Railway Station  
12 Mins Drive



Airport (Proposed)  
15 Mins Drive

# A Club House for revitalizing your mind, body & soul


















The contemporary designs, with an essence of peaceful living make **Avinash Atulya** a beautiful residence to live in. Our exclusive world-class **Club Atulya** is brimming with bountiful amenities. Its ultra modern architecture is designed in such a manner that the structure beautifully blends with its surrounding landscapes. Equipped with full range of Indoor sports like Table Tennis, Squash, Pool Table, Badminton etc. and wellness & recreational facilities, it will be teeming with leisure activities that cater to both individual & group needs.



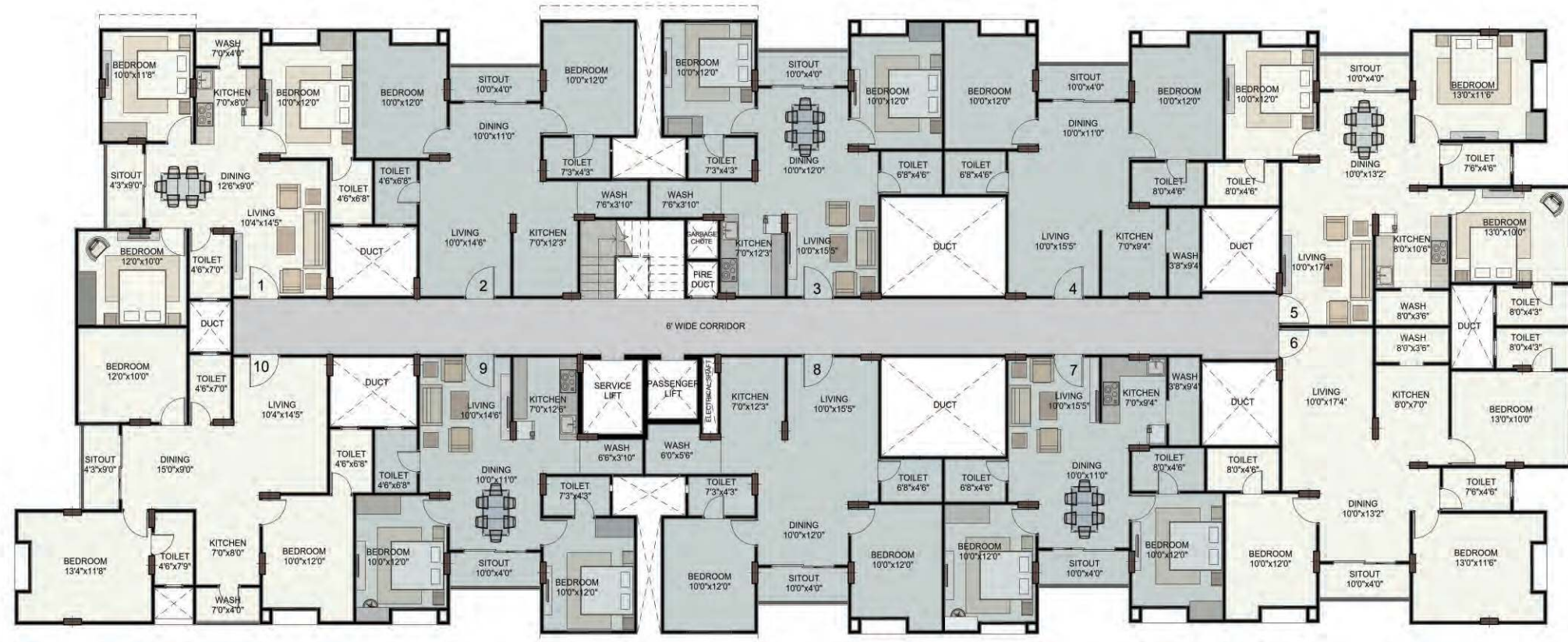
## Site Plan



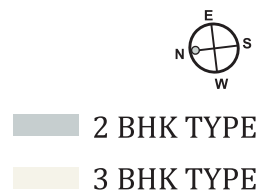
## Common Amenities

- |  |   |  |  |
|--|---|--|--|
|  Entry Gate with Security Cabin |  Club House    |  Secured Campus with Boundary Wall                        |  Sewage Treatment Plant     |
|  Community Hall                 |  Jogging Track |  2 Lifts in A, B & D Block with 1 Passenger & 1 Stretcher |  Garbage Duct in Each Tower |
|  Kids Play Area                 |  Gymnasium     |  Power Backup for Common Areas                            |  Rainwater Harvesting       |
|  Landscape Garden               |  Indoor Games  |  Fire Fighting System as per IS norms                     |  |

## Block A Floor Plan



Flat No	Type	1st	2nd	3rd	4th	5th
1	3 BHK	1094	1085	1075	1085	1085
2	2 BHK	922	922	914	922	922
3	2 BHK	922	939	930	948	939
4	2 BHK	939	939	930	930	939
5	3 BHK	1308	1295	1295	1284	1295
6	3 BHK	1308	1295	1295	1284	1295
7	2 BHK	939	939	930	930	939
8	2 BHK	948	948	939	948	948
9	2 BHK	930	930	922	930	930
10	3 BHK	1223	1202	1209	1209	1202



## Block A Penthouse

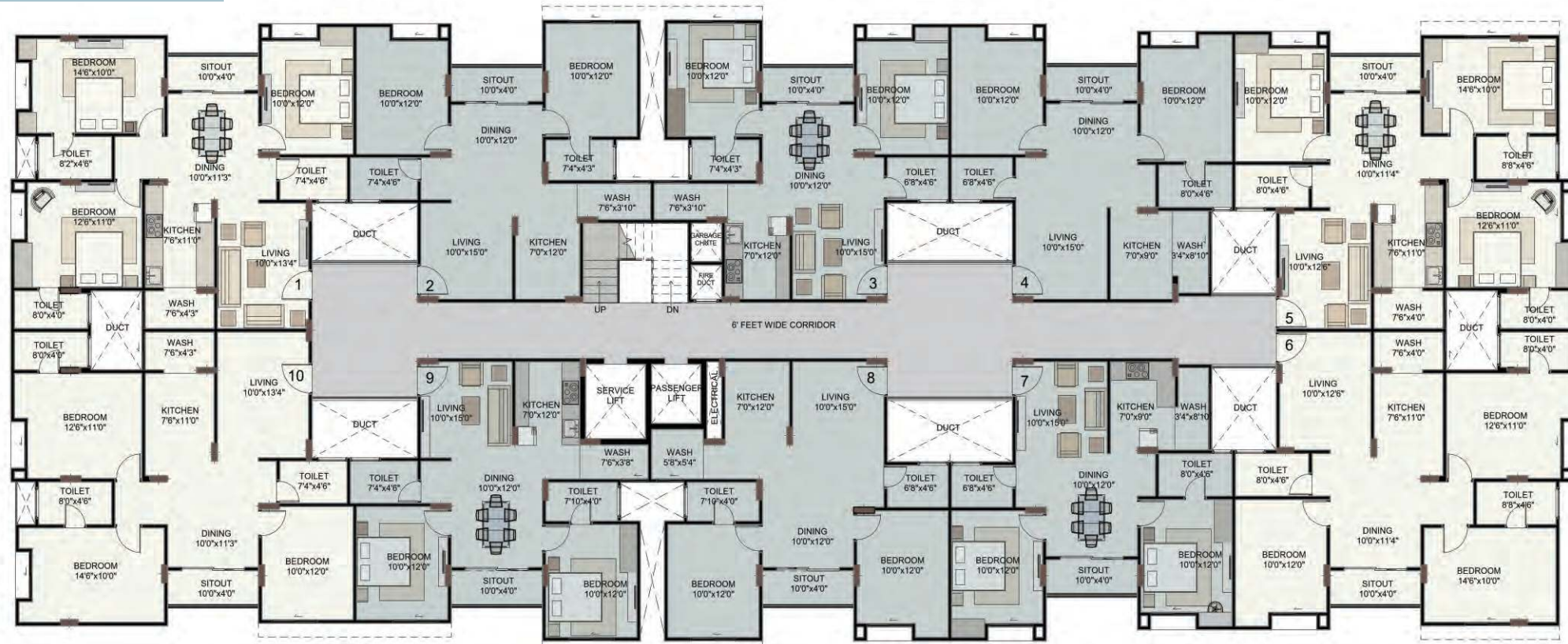


S. NO.	Type	Carpet	Balcony	Utility	RERA Area	Terrace	BUA	SBA
1	3BHK	791	147	22	960	376	1031	1289
2	3BHK	774	153	24	951	460	1036	1295
3	3BHK	770	153	24	947	460	1025	1281
4	3BHK	776	160	25	961	286	1037	1296

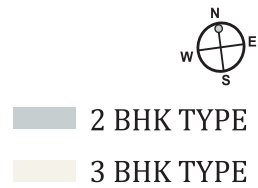




## Block B Floor Plan



Flat No.	Type	1st	2nd	3rd	4th	5th
1	3 BHK	1308	1295	1295	1284	1295
2	2 BHK	930	930	930	922	922
3	2 BHK	930	922	914	922	922
4	2 BHK	948	948	939	939	948
5	3 BHK	1295	1295	1284	1284	1295
6	3 BHK	1295	1295	1284	1284	1295
7	2 BHK	948	948	939	939	948
8	2 BHK	948	948	939	948	948
9	2 BHK	948	948	948	939	948
10	3 BHK	1308	1295	1295	1284	1295



## Block B Penthouse



S. NO.	Type	Carpet	Balcony	Utility	RERA Area	Terrace	BUA	SBA
1	3BHK	818	143	20	981	437	1055	1319
2	3BHK	870	148	30	1048	383	1116	1395
3	3BHK	870	148	30	1048	395	1120	1400
4	3BHK	840	143	24	1007	439	1080	1350



## Block D Floor Plan



Flat No	Type	1st	2nd	3rd	4th	5th
1	3 BHK	1291	1276	1276	1268	1276
2	3 BHK	1403	1403	1403	1395	1403
3	3 BHK	1352	1352	1352	1340	1352
4	3 BHK	1210	1200	1200	1200	1200
5	3 BHK	1310	1303	1290	1290	1298
6	2 BHK	961	961	953	961	953
7	2 BHK	1011	1011	1003	1011	1011
8	2 BHK	957	957	949	949	957
9	3 BHK	1303	1289	1289	1289	1289



2 BHK TYPE  
3 BHK TYPE

## Block D Penthouse



S. NO.	Type	Carpet	Balcony	Utility	RERA Area	Terrace	BUA	SBA
1	2BHK	758	82	36	876	700	947	1184
2	2BHK	763	95	38	896	571	926	1158
3	2BHK	649	128	32	809	571	869	1086
4	2BHK	637	124	30	791	460	852	1065



## Block C Floor Plan



S. NO.	Type	1st	2nd	3rd	4th	5th
1	1 BHK	620	610	610	610	610
2	1 BHK	620	620	620	620	620
3	1 BHK	628	628	628	628	628
4	1 BHK	628	628	628	628	628
5	1 BHK	620	620	620	620	620
6	1 BHK	620	610	610	610	610

## Isometric View 1 BHK



## Isometric View 3 BHK



1 BHK TYPE

# Quality is priority

We have worked with the finest architects and development team to deliver the most enduring homes. No wonder, each home is a benchmark in quality and is always at par with international standards. Simply put, we have changed the concept of quality and luxury by choosing only branded products, fittings and accessories to ensure top quality. We are absolutely confident with the quality which we render in our projects. In case property entails any maintenance then we will do it for free under 1 year guarantee period.



## Flooring

- ◆ 2x2 Vitrified tiles Nano Polish in Hall, Bedroom and Kitchen Floor.
- ◆ Rustic Ceramic Tiles in Balcony and Wash Area.
- ◆ Combination of Vitrified Tiles, Granite in stairs and lobby area.

## Doors & Windows

- ◆ Designer Masonite Doors with mortice lock.
- ◆ 1.5 mm thick, three-track anodized aluminum sections sliding with clear glass.

## Electrical

- ◆ Electrical points as per furniture layout.
- ◆ Telephone, T.V., A.C. points in living room.
- ◆ Fire retardant cable and modular switches of reputed brands.

## Wall Finishes

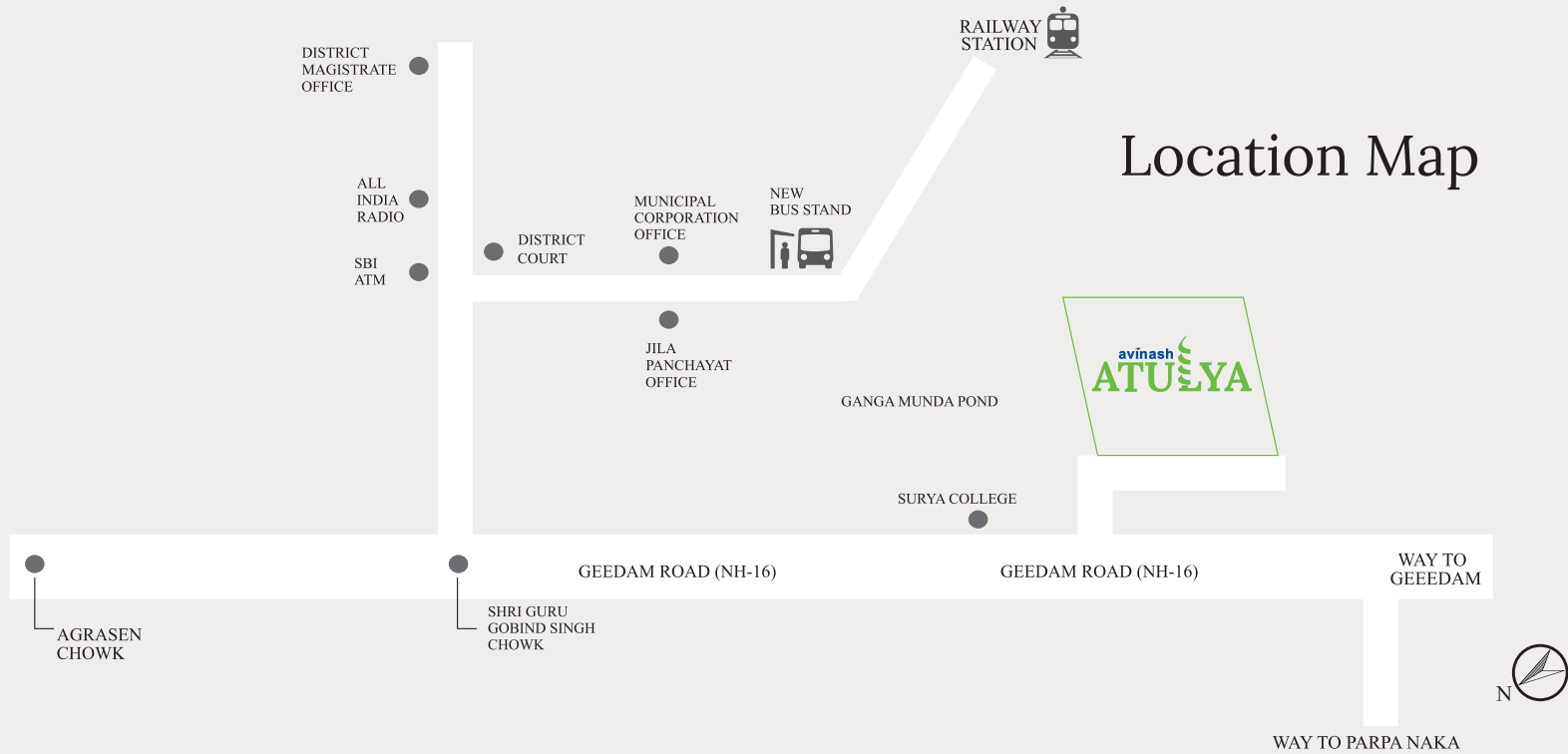
- ◆ Cement base putty finish in all interior walls.
- ◆ Weather proof emulsion paint in exterior walls.

## Toilets

- ◆ Glazed ceramic tiles dado up to 7' height.
- ◆ 3 IN 1 mixture in shower area and other taps.
- ◆ Wall mounted wash basin of reputed make.
- ◆ Point for geyser, exhaust fan and mirror light.

## Kitchen

- ◆ Granite platform top
- ◆ Steel sink.
- ◆ Ceramic tile dado
- ◆ Electrical points for Refrigerator, Chimney, Water purifier, Microwave and Mixer



**avinash**  
a relation for life

**Corporate Office** - Avinash Developers Pvt. Ltd.,  
Avinash House, Maruti Business Park,  
G.E. Road, Raipur-492001, Chhattisgarh, India  
Email : sales.atulya@avinashgroup.com, Tel.: 0771-4033425



**Avinash Atulya Site Address** - Near Old Surya Collage  
Geedam Road, Jagdalpur, Chhattisgarh  
For Booking Call : **88822 99099**

**Disclaimer :** All Rights Reserved- No part of this brochure will be reproduced, stored or transmitted in any form or by any means, electronic or mechanical, including photocopy or recording on any other information page storage or retrieval system, without written permission of Avinash Group.  
This brochure is purely conceptual and not a legal offering. The developer reserves all rights to add, delete, alter any details, specifications, mentioned herein. The brochure is indicative of how the furniture can be arranged in the residential unit. No furniture is to be supplied to the purchaser by the developer unless otherwise mentioned. All images, unless otherwise indicated are used for illustrative purpose only.  
Avinash Group logo and Avinash Atulya logo are sole propriety and liability of Avinash Developers Pvt. Ltd.

www.avinashgroup.com

Follow us on : /avinashgroup

GPS : Avinash Atulya Jagdalpur