

# maruti lifestyle



Villa & Villa Apartment



## VILLA APARTMENTS

Plan & Specifications

**avinash**  
a relation for life



a name you can trust upon

Avinash Group is the first name to reckon in Central India when it comes to customer satisfaction, Trust, Transparency, Quality, sustained growth & innovation. It was incepted in the year 1996 on the strong foundation of ethical values in compliance with environment to enhance lifestyles. In 22 years, the company has reached its position as the most trusted name in real estate of Central India. Avinash Group has completed several landmark projects and is currently developing significant projects across Chhattisgarh. Many projects of Avinash Group have received several recognitions for its quality and innovations.

52 LANDMARK PROJECTS | 37 RESIDENTIAL  
11 COMMERCIAL | 3 MALLS & 1 CLUB

**avinash**  
a relation for life

<p><b>Avinash New County</b> ASIA's 100 Best Awarded Project 2014-15</p>		<p><b>Maruti Lifestyle</b> Only 6 Star rated project in central India CRISIL 6 STAR RATING</p>
<p><b>Maruti Solitiare</b> Chattisgarh's 1<sup>st</sup> Certified Green Building ★★★★ GRIHA Certified Project (TERI)</p>		<p><b>Mr. Anand Singhania</b> Face of Real Estate in Chhattisgarh Real Estate Achievers Award 2015</p>
<p><b>Club Paraiso</b> The Best Club House Real Estate Achivers Award 2015</p>		<p><b>Magneto The Mall</b> Most Admired Shopping Center of The Year Images Shopping Center Awards 2010 &amp; 14</p>
<p><b>Avinash Group</b> Best Commercial Developer of Central India National Award 2010</p>		<p><b>Magneto The Mall</b> Best Commercial Property in Eastern Region CNBC Awaaz-CRISIL CREDAI Real Estate Awards 2010</p>

# About Maruti Lifestyle

## *Resort Living Every Day*

A City within a city, Maruti Lifestyle is a home to Residential Neighborhoods, Commercial space, lavish Club and serene Gardens everything is complemented by luxuriant environment, developed on authentic Spanish architectural, free from busting noise and pollution .

The beauty of your homes bouncing in lavishness is a royal retreat of reverberating melodies of bliss and peace. 210 Luxury Villa Apartments and 136 Villas with Spanish architecture and elevations, magnificent entrance arcade, 2,50,000 sqft Club, a Boutique commercial complex Lifestyle Empressa, large spread of greenery, 60' wide roads, modern security surveillance and traffic regulations speak in short about the creation of an integrated lifestyle.

Life can be lived to the fullest in the new world of Luxurious & Exclusive Styled Villa Apartments with a touch of the Spanish Lifestyle. An elite niche carved with rich craftsmanship of premium amenities. A distinctive Spanish lifestyle to suit your modern day needs. Back home you experience, resort living every day, a magical drain of stress and strain.

The touch of elegance flows within the homes like a silent river. The sequence of amenities makes your life serene breaking the monotony of crowded townships.

- ⊙ A landmark living, your signature abode
- ⊙ 3 Bedrooms Villa Apartments
- ⊙ Separate Servant rooms
- ⊙ Adherence to Vastu Shastra
- ⊙ Ample natural lighting
- ⊙ Luxurious living experience, A Perfect New Haven.

What more will one want when paradise knocks the door.



A large, multi-story apartment building with a yellow facade and white balconies, set in a landscaped courtyard with a pergola and walkways.

maruti lifestyle



Villa & Villa Apartment



*2.5 Lac Soft...*  
*Central India's Largest Club*

Added features to rejuvenate and revamp the Lifestyle.



Sevilla -Multi Cuisine Restaurant



Cabana The Hut



Ceremonia - Banquet Hall

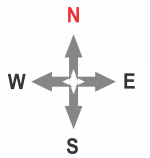
- 2 Squash Courts
- Indoor Badminton & Basket Ball
- Table Tennis
- Board Games Room
- Banquet for 500 people
- Meditation Room & Yoga
- Gymnasium
- Steam & Sauna Bath
- 30 Guest Rooms
- Billiards & Pool
- Sevilla - Multi Cuisine Restaurant
- Cabana The Hut - Pub
- Tabarana - Discotheque
- Ceremonia - Banquet Hall
- Lawn Tennis Court
- Swimming Pool - 12mtr x 25mtr
- Toddler's Fun Pool
- Outdoor Jacuzzi

**Disclaimer :- Club membership is mandatory for Maruti Lifestyle residents. Membership can be given to outsiders if they meet the club membership criteria.**

# Layout Of Villa Apartment

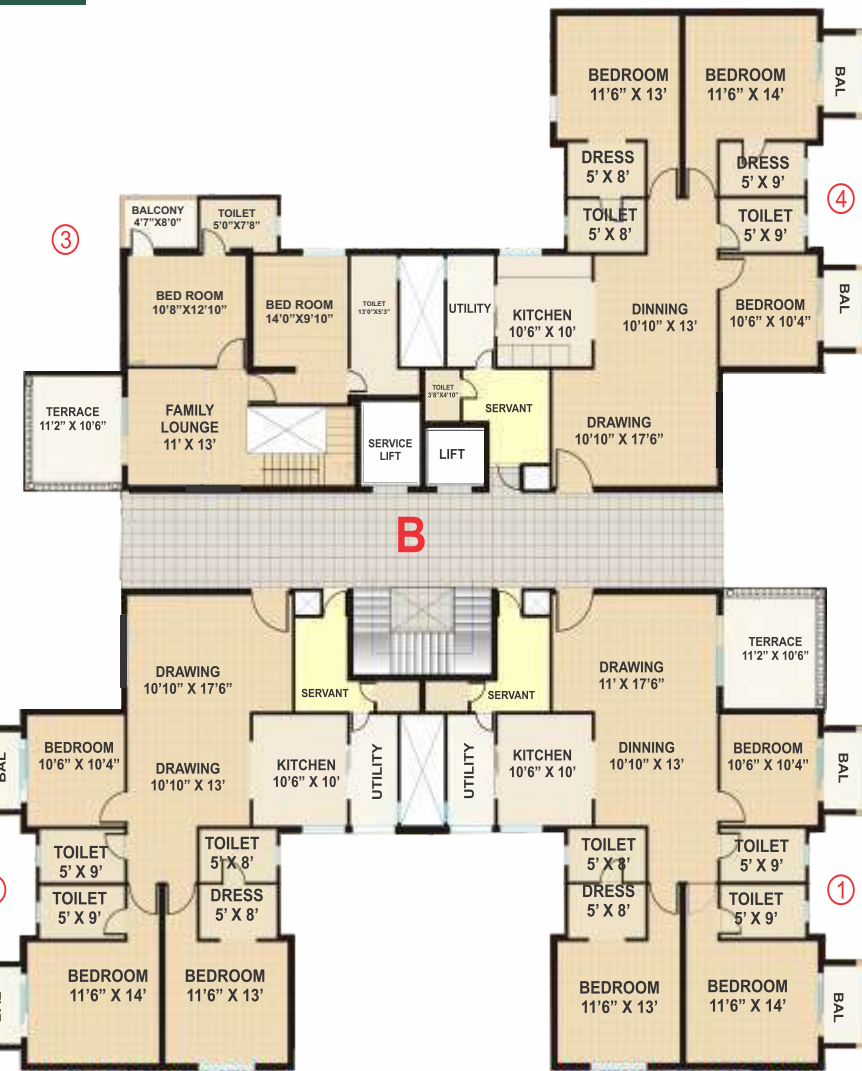
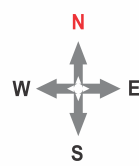
maruti lifestyle

Villa & Villa Apartment





A



B

1st, 3rd, 5th, 7th FLOOR PLAN (A-BLOCK)

FLAT NO.	CARPET	UTILITY	BALCONY	TERRACE	TOTAL
A-101	1190 SQFT	51 SQFT	89 SQFT	0 SQFT	1330 SQFT
A-102	1192 SQFT	51 SQFT	89 SQFT	117 SQFT	1449 SQFT
A-103	1213 SQFT	51 SQFT	89 SQFT	0 SQFT	1353 SQFT
A-104	1190 SQFT	51 SQFT	89 SQFT	117 SQFT	1447 SQFT

1st, 3rd, 5th, 7th FLOOR PLAN (B-BLOCK)

FLAT NO.	CARPET	UTILITY	BALCONY	TERRACE	TOTAL
B-101	1190 SQFT	51 SQFT	89 SQFT	117 SQFT	1447 SQFT
B-102	1190 SQFT	51 SQFT	89 SQFT	0 SQFT	1330 SQFT
B-103 (2 BHK)	618 SQFT	0 SQFT	40 SQFT	0 SQFT	658 SQFT
B-104	1213 SQFT	51 SQFT	89 SQFT	0 SQFT	1353 SQFT

# Villa Apartment

# maruti lifestyle

Villa & Villa Apartment



**2nd, 4th, 6th FLOOR PLAN (B-BLOCK)**

FLAT NO.	CARPET	UTILITY	BALCONY	TERRACE	TOTAL
B-201	1190 SQFT	51 SQFT	89 SQFT	0 SQFT	1330 SQFT
B-202	1190 SQFT	51 SQFT	89 SQFT	117 SQFT	1447 SQFT
B-203 (Duplex)	1101 SQFT	55 SQFT	81 SQFT	124 SQFT	1360 SQFT
B-204	1213 SQFT	51 SQFT	89 SQFT	117 SQFT	1470 SQFT



**7th FLOOR PLAN (C-BLOCK)**

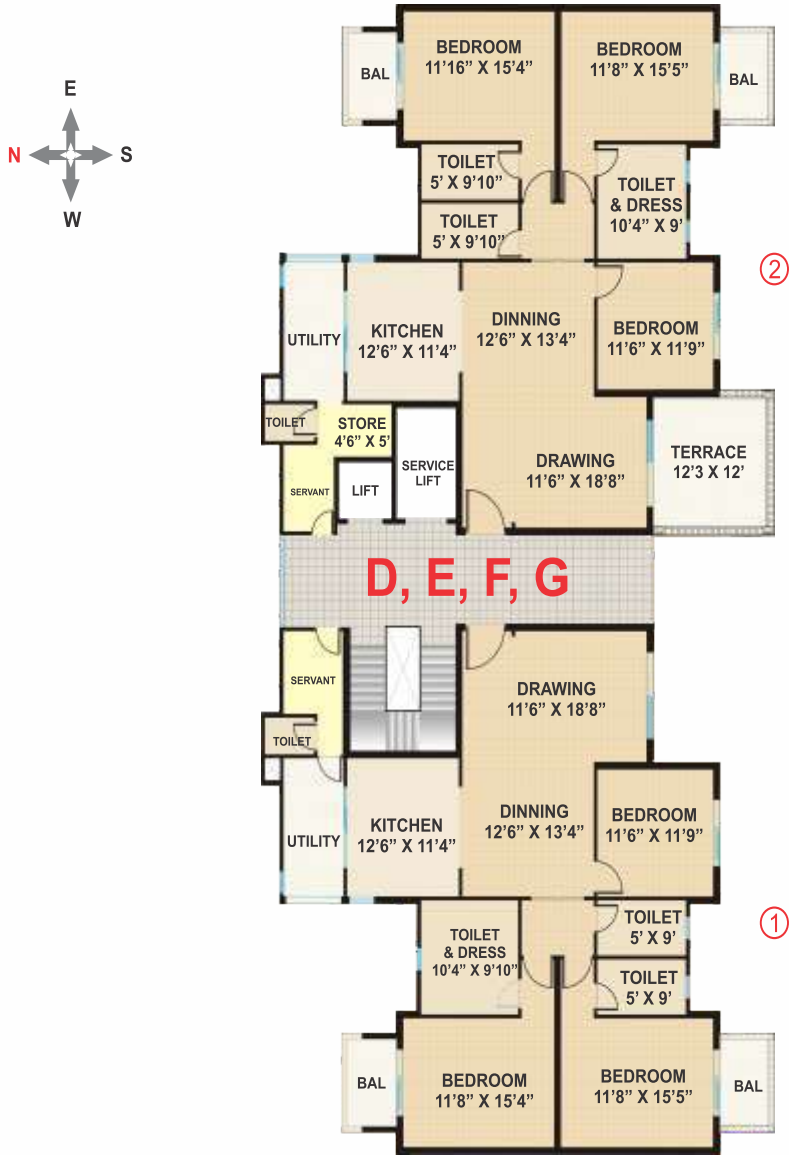
FLAT NO.	CARPET	UTILITY	BALCONY	TERRACE	TOTAL
C-701	913 SQFT	49 SQFT	73 SQFT	0 SQFT	1035 SQFT



# maruti lifestyle

Villa & Villa Apartment

## Villa Apartment



**7th FLOOR PLAN (D, E, F, G BLOCK)**

FLAT NO.	CARPET	UTILITY	BALCONY	TERRACE	TOTAL
701	1366 SQFT	78 SQFT	95 SQFT	0 SQFT	1538 SQFT
702	1386 SQFT	78 SQFT	95 SQFT	150 SQFT	1708 SQFT



**1st, 3rd, 5th, 7th FLOOR PLAN (BLOCK-H)**

FLAT NO.	CARPET	UTILITY	BALCONY	TERRACE	TOTAL
101	1366 SQFT	78 SQFT	95 SQFT	0 SQFT	1539 SQFT
102	1386 SQFT	78 SQFT	95 SQFT	0 SQFT	1559 SQFT

# VILLA APARTMENT

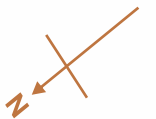
maruti lifestyle

Villa & Villa Apartment



1st FLOOR PLAN (BLOCK-I & J)

FLAT NO.	CARPET	UTILITY	BALCONY	TERRACE	TOTAL
101	1121 SQFT	54 SQFT	110 SQFT	75 SQFT	1360 SQFT
102	1094 SQFT	54 SQFT	73 SQFT	37 SQFT	1258 SQFT
103	1094 SQFT	54 SQFT	148 SQFT	173 SQFT	1469 SQFT
104	1142 SQFT	54 SQFT	185 SQFT	173 SQFT	1553 SQFT



# VILLA APARTMENT



**2nd, 4th, 6th, 8th FLOOR PLAN (BLOCK-I & J)**

FLAT NO.	CARPET	UTILITY	BALCONY	TERRACE	TOTAL
201	1121 SQFT	54 SQFT	110 SQFT	37 SQFT	1322 SQFT
202	1094 SQFT	54 SQFT	73 SQFT	75 SQFT	1295 SQFT
203	1094 SQFT	54 SQFT	73 SQFT	37 SQFT	1258 SQFT
204	1142 SQFT	54 SQFT	110 SQFT	75 SQFT	1381 SQFT

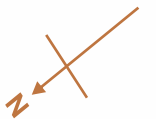


# VILLA APARTMENT



3rd, 5th, 7th FLOOR PLAN (BLOCK-I & J)

FLAT NO.	CARPET	UTILITY	BALCONY	TERRACE	TOTAL
301	1121 SQFT	54 SQFT	110 SQFT	75 SQFT	1360 SQFT
302	1094 SQFT	54 SQFT	73 SQFT	37 SQFT	1258 SQFT
303	1094 SQFT	54 SQFT	73 SQFT	75 SQFT	1295 SQFT
304	1142 SQFT	54 SQFT	110 SQFT	37 SQFT	1343 SQFT



## Features & Specifications

maruti lifestyle

Villa & Villa Apartment

### Flooring



Drawing, Dining & Rooms	:	Vitrified Tiles Kajaria Rak equivalent
Kitchen	:	Granite platform with SS sink
Common Lobby & Stairs	:	Marbel Finish

### Bathroom



Toilet Fittings	:	Single liver diverter & tap fittings Jaguar or equivalent
Sanitary	:	Wall hung W/C & Wash Basin Jaguar or equivalent
Wall & Floor Tiles	:	Ceramic Tiles Kajaria or equivalent

### Electrical



- ✍ Uninterrupted power supply with power backup through Invertor (1KVA)
- ✍ T.V. & Telephone Points for every room, fire retardant wires for extra safety of RR Cable/Finox or equivalent
- ✍ Modular switches ISI Marked

### Painting



Interior (A to H Block)	:	Emulsion Paint ICI DULUX or equivalent
Interior (I & J Block)	:	Birla /JK putty finish or equivalent
Exterior	:	Weather Proof Emulsion Paint ICI DULUX or equivalent

### Door Window



Door Frame	:	Teak Wood
Door Shutter	:	Decorative veneer finish door with mortise locks & fittings.
Window Panels	:	3 track UPVC French windows.

### Common Amenities

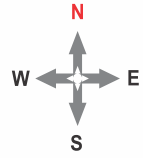
- ✍ Central India's largest Club (Club Paraiso)
- ✍ 60' & 44' wide Bitumen Road
- ✍ Underground electric cable and other service cables
- ✍ Footpath
- ✍ Power Backup for common area
- ✍ Gas Bank\*
- ✍ Rain water harvesting
- ✍ Sewerage Treatment Plant
- ✍ Closed campus with natural stone wall upto 10 feet with concertina fence
- ✍ Thick vegetation
- ✍ Amphitheater
- ✍ Kids Play Area
- ✍ Boom barrier with access control
- ✍ CCTV in campus
- ✍ Intercom

\* Gas Connection on charge basis



# Master Layout

maruti lifestyle  
Villa & Villa Apartment



Future Expansion

Lifestyle Empressa

Block

ROAD

## CUSTOMER'S TESTIMONIALS



Mr. & Mrs. A.K. Sharma

I found my dream home at Avinash Group where the Spanish luxurious villas are beautifully designed to sense the next phase of modern living. With the benefit of locational advantage, it is surrounded with the plethora of greenery all around. After my happy retirement I was in search of a satisfactory serene living & my search came to end when I found an innovational approach of living at Maruti Lifestyle. The passion and commitment to deliver the quality Homes on time was yet another impressive reason to opt Maruti with Avinash Group.



Dr. Prashant Kadi

Here's a long overdue note to thank you for your one of the best project called Maruti lifestyle.

Your Vision & creativity can be seen in your project, what have you made some decade ago is still at par with today's interior and exterior designs. Avinash group does quality work and follows up on problems that crop up, if any. We've been very proud to mention you to all our friends. Thanks a lot for everything!!



Mr. & Mrs. Vipin Jain

Words are less to express how happy we are, after getting an apartment in Maruti Lifestyle, Kota, Raipur. The team is extremely helpful and available to solve even single problems personally. The infrastructure of Maruti Lifestyle is so beautiful as this gives us a feeling of living in a resort every day.



Mr. Anil Kundaliya

"Maruti Lifestyle" Jaise namm waise pehchan. Sampurna Jeevanshaili ki sabhi vishistataon liye yaha har wo suvidhaein mojud hai jo aapke jeevan ke har pal ko khas banane ke liye kafi hai. I am proud to have my home in Maruti Lifestyle.

Thanks Avinash.



Dr. Nitin Goel

I have many reasons to go with Maruti Lifestyle, either you talk about the security or the state-of-the-art club with the magnificent facilities or about the spacious bungalows. Everything is just WOW, and I always wanted to experience such a lifestyle. The people residing here can only know the exclusivity of living at Maruti Lifestyle.



Mr. Vinay Bajaj

It's for the first time ever I can experience the lavishness of Central India's Biggest Club Parasio and can relish the blend of cultural cum magnificent lifestyle. Also the lush green environment and the spread tranquility is enough to purify the soul. I really appreciate Avinash Group's impressive approach.





**avinash**  
a relation for life

Avinash House, Maruti Business Park, G.E. Road, Raipur - 492001 (C.G.)  
 Mob.: +91 78049 11113, +91 90982 22444  
 Site Ph.: +91-771-4024425, www.avinashgroup.com, connect@avinashgroup.com

Note: This brochure is purely conceptual and not a legal document. The information in the brochure is indicative of development that is proposed. The developers reserve the right to change plan, specifications or features as and when required