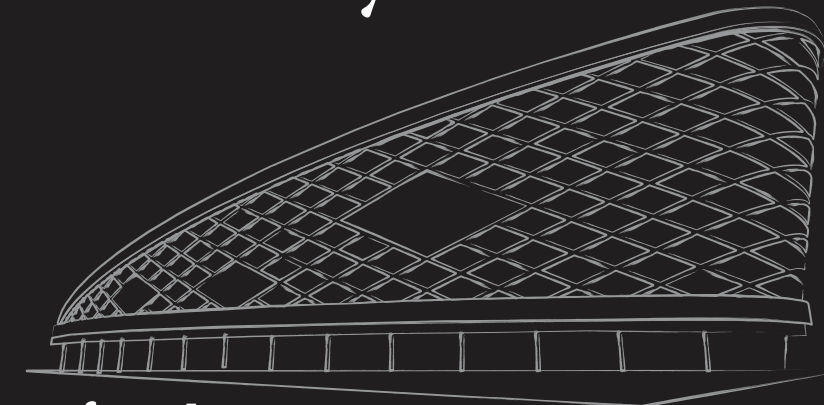


# Own Your Commercial Space near Mantralaya



## avinash TIMES SQUARE

Naya Raipur | Shops | Offices | Business Centre |



# PLANS & SPECIFICATIONS





# Avinash Group – Taking Naya Raipur to Naya Heights!

## Developments in NAYA RAIPUR

### Completed Projects -

"Over 75 kms of road (Phase-I) International Cricket Stadium, Hidaytulla National Law University, Capital Complex (Nearing Completion), Residential/Housing Development I Sector-27 (Nearing Completion), Expressway (From NH-6 and Airport to Naya Raipur), Mukhtangan, Naya Rakhi".

### Ongoing Projects -

"Star Hotel and Convention, Exhibition Center (100 Acre), Mana-Tuta Tourism Center, IIT, IIM, ITM, University, Cancer, Housing Development in Sector 30, Satya Sai Super Speciality Hospital, Knowledge Park, Water Supply System, Underground City Electrical Infrastructure, Sewerage system, Underground Telecom System"

### Upcoming Projects -

"Railway Station, IT SEZ, Sports City, Theme Township, Golf Course, Logistic Hub, BRT System, CBD, Museum, Art Gallery, Amusement Park, Botanical Garden, Jungle Safari, Gems & Jewelry SEZ Housing Development. Super / Multi Speciality Hospital Polyclinic Nursing Home, High/Higher Secondary Schools, Night Shelters, Rental Housing, Multi-purpose Community Center and many more projects of real estate and infrastructure developments."



## Ideally located in NAYA RAIPUR

### Naya Raipur- the upcoming capital of Chhattisgarh

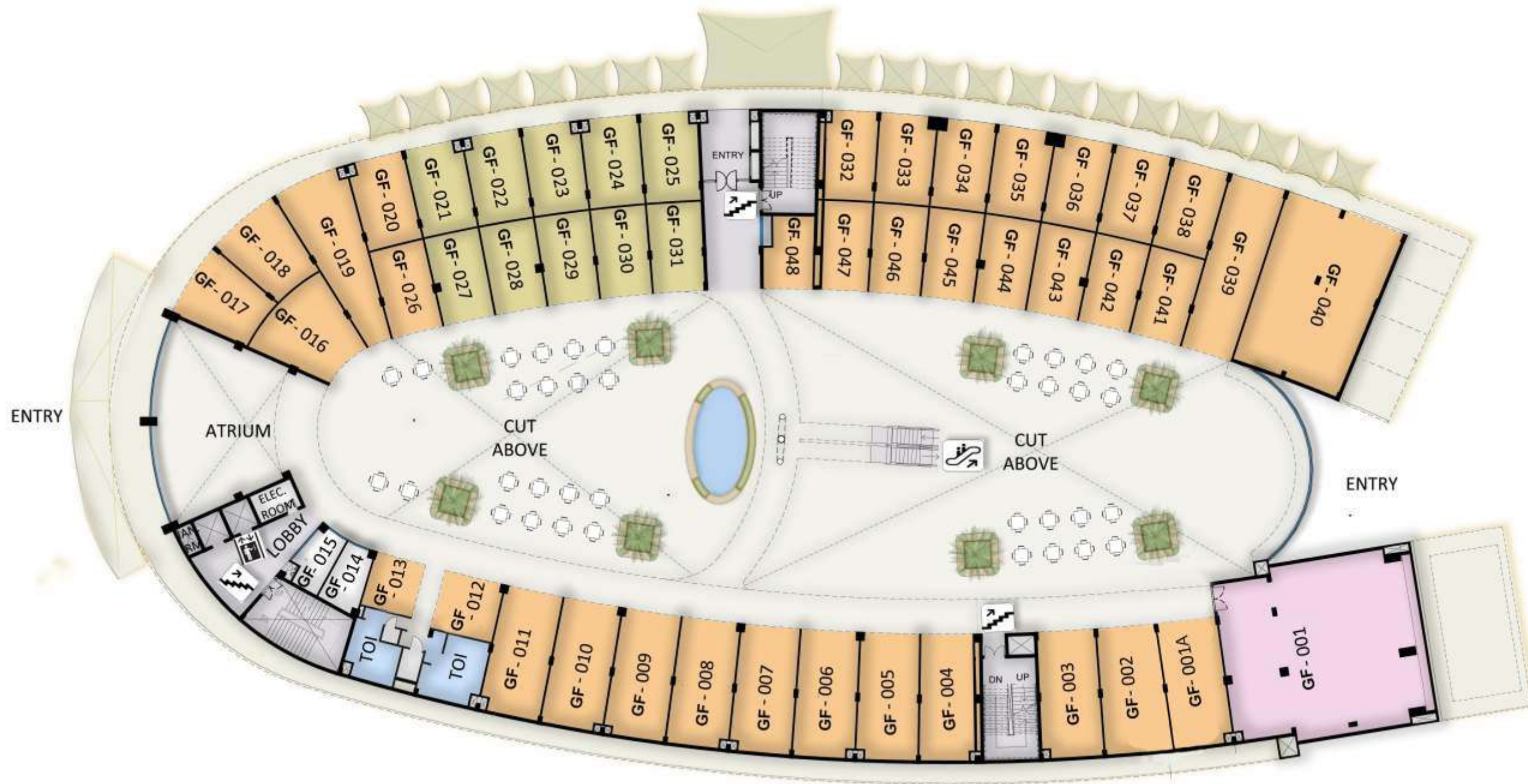
is developed in close proximity to the Raipur airport and spreads over an area of approximately 106.6 square kilometers, including the green belt.

Here the future is steadily and glamorously evolving. It is rated as the top 5 new cities that are being developed around the world.

Blossoming here, are enormous sectors you can imagine- health, education, eco tourism, infrastructural development sectors, world class infrastructure and unmatched luxury, in order to smoothen your lifestyle and make it easy by leaps and bounds.

Consisting of capital complex, super specialty hospitals and world class sports complex, recreational landmarks, jungle safari, amusement park, etc. every idea here is impeccably chosen and strewn carefully to create the masterpiece called - Naya Raipur.

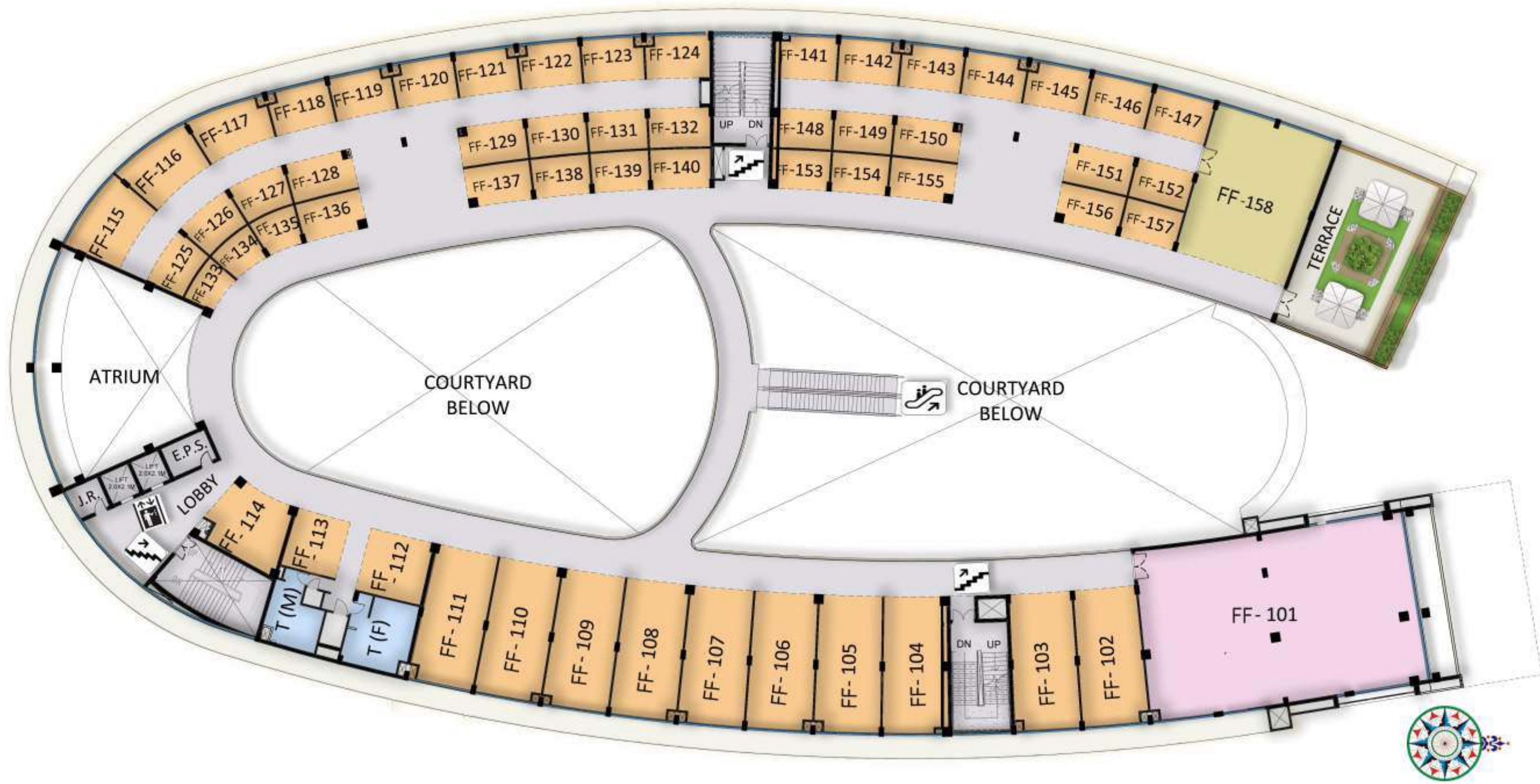




UNIT NO	SBA	UNIT NO	SBA	UNIT NO	SBA	UNIT NO	SBA	UNIT NO	SBA	UNIT NO	SBA	UNIT NO	SBA
GF-01	2550	GF-06	560	GF-12	268	GF-18	401	GF-24	361	GF-30	347	GF-36	358
GF-01A	561	GF-07	560	GF-13	210	GF-19	653	GF-25	361	GF-31	364	GF-37	358
GF-02	559	GF-08	560	GF-14	175	GF-20	361	GF-26	347	GF-32	361	GF-38	358
GF-03	559	GF-09	560	GF-15	161	GF-21	361	GF-27	347	GF-33	358	GF-39	712
GF-04	540	GF-10	560	GF-16	512	GF-22	361	GF-28	347	GF-34	358	GF-40	1539
GF-05	560	GF-11	556	GF-17	394	GF-23	361	GF-29	347	GF-35	358	GF-41	348
												GF-42	348
												GF-43	348
												GF-44	348
												GF-45	348
												GF-46	348
												GF-47	332
												GF-48	262

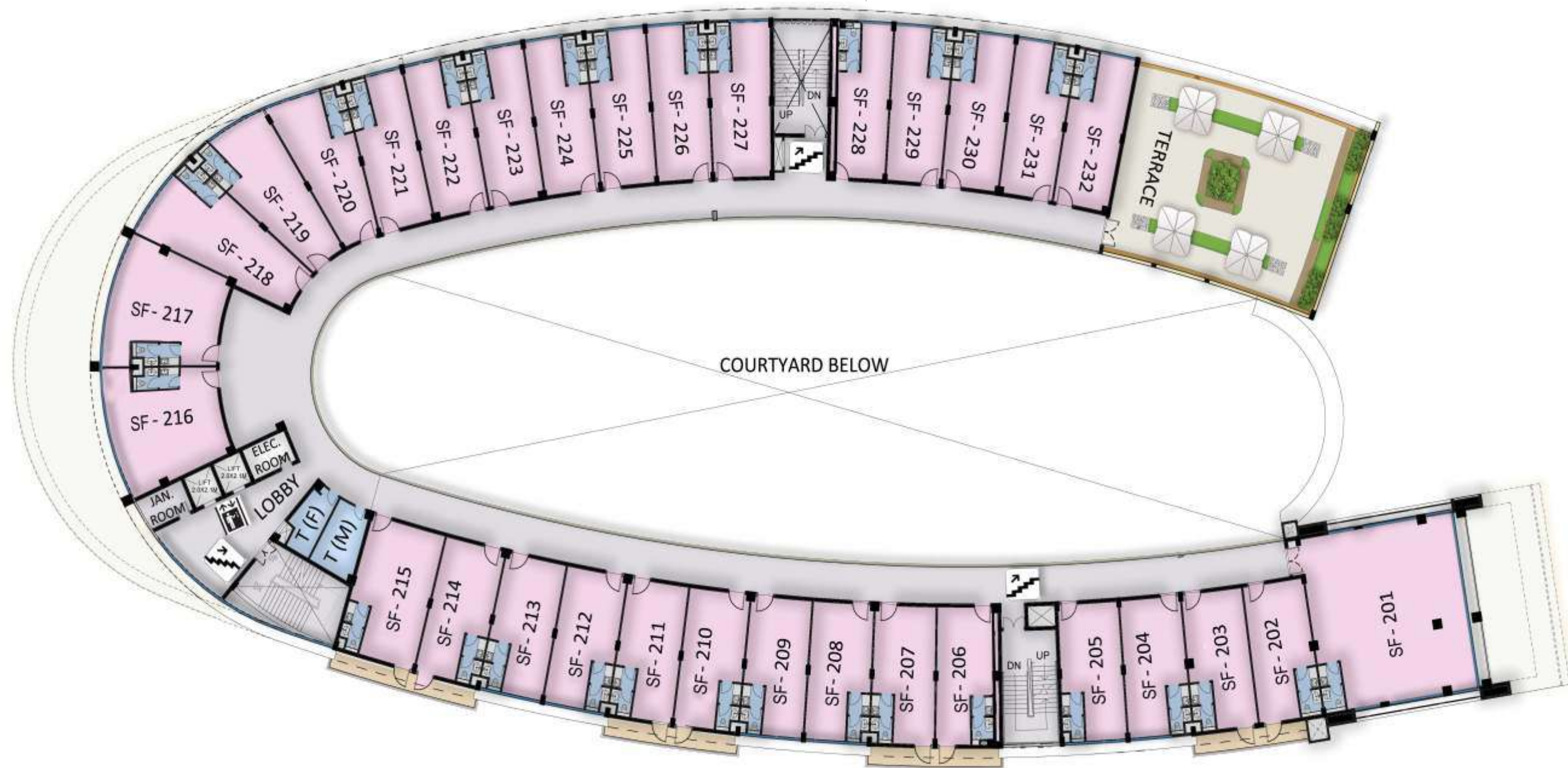


# First Floor Plan



UNIT NO	SBA	UNIT NO	SBA	UNIT NO	SBA	UNIT NO	SBA	UNIT NO	SBA	UNIT NO	SBA	UNIT NO	SBA	UNIT NO	SBA	UNIT NO	SBA
FF-101	3002	FF-108	560	FF-115	321	FF-122	169	FF-129	166	FF-136	161	FF-143	171	FF-150	165	FF-157	145
FF-102	559	FF-109	560	FF-116	266	FF-123	169	FF-130	149	FF-137	160	FF-144	171	FF-151	165	FF-158	1185
FF-103	576	FF-110	560	FF-117	221	FF-124	179	FF-131	149	FF-138	144	FF-145	171	FF-152	150		
FF-104	535	FF-111	556	FF-118	169	FF-125	155	FF-132	156	FF-139	144	FF-146	171	FF-153	147		
FF-105	560	FF-112	268	FF-119	169	FF-126	138	FF-133	106	FF-140	152	FF-147	171	FF-154	147		
FF-106	560	FF-113	205	FF-120	169	FF-127	138	FF-134	94	FF-141	174	FF-148	151	FF-155	161		
FF-107	560	FF-114	334	FF-121	169	FF-128	163	FF-135	106	FF-142	169	FF-149	151	FF-156	162		

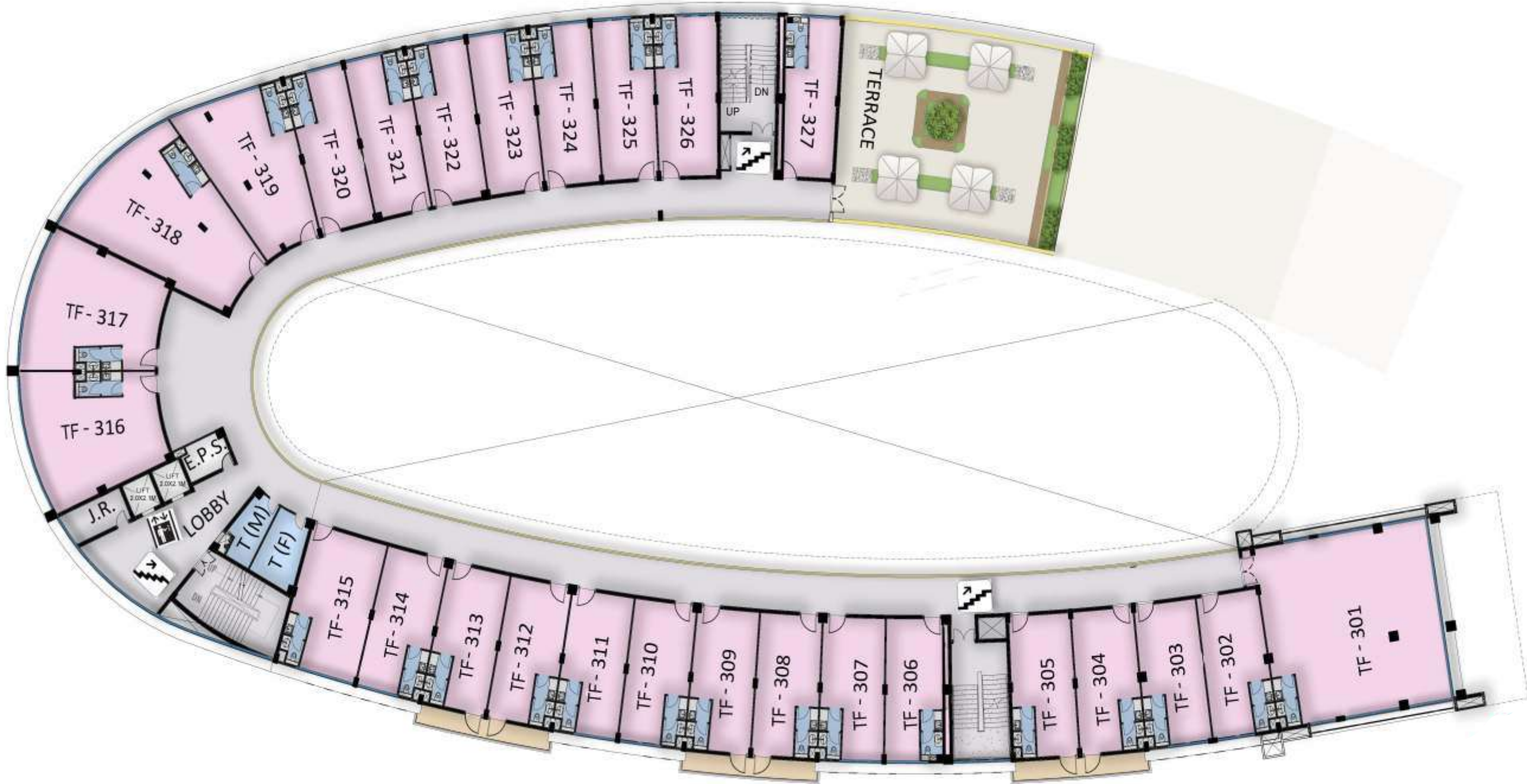




UNIT NO	SBA	UNIT NO	SBA	UNIT NO	SBA	UNIT NO	SBA	UNIT NO	SBA	UNIT NO	SBA
SF-201	1798	SF-207	649	SF-213	556	SF-219	665	SF-225	575	SF-231	575
SF-202	628	SF-208	560	SF-214	649	SF-220	594	SF-226	575	SF-232	575
SF-203	653	SF-209	560	SF-215	822	SF-221	575	SF-227	623		
SF-204	561	SF-210	649	SF-216	832	SF-222	575	SF-228	557		
SF-205	582	SF-211	649	SF-217	819	SF-223	575	SF-229	575		
SF-206	624	SF-212	560	SF-218	748	SF-224	575	SF-230	575		

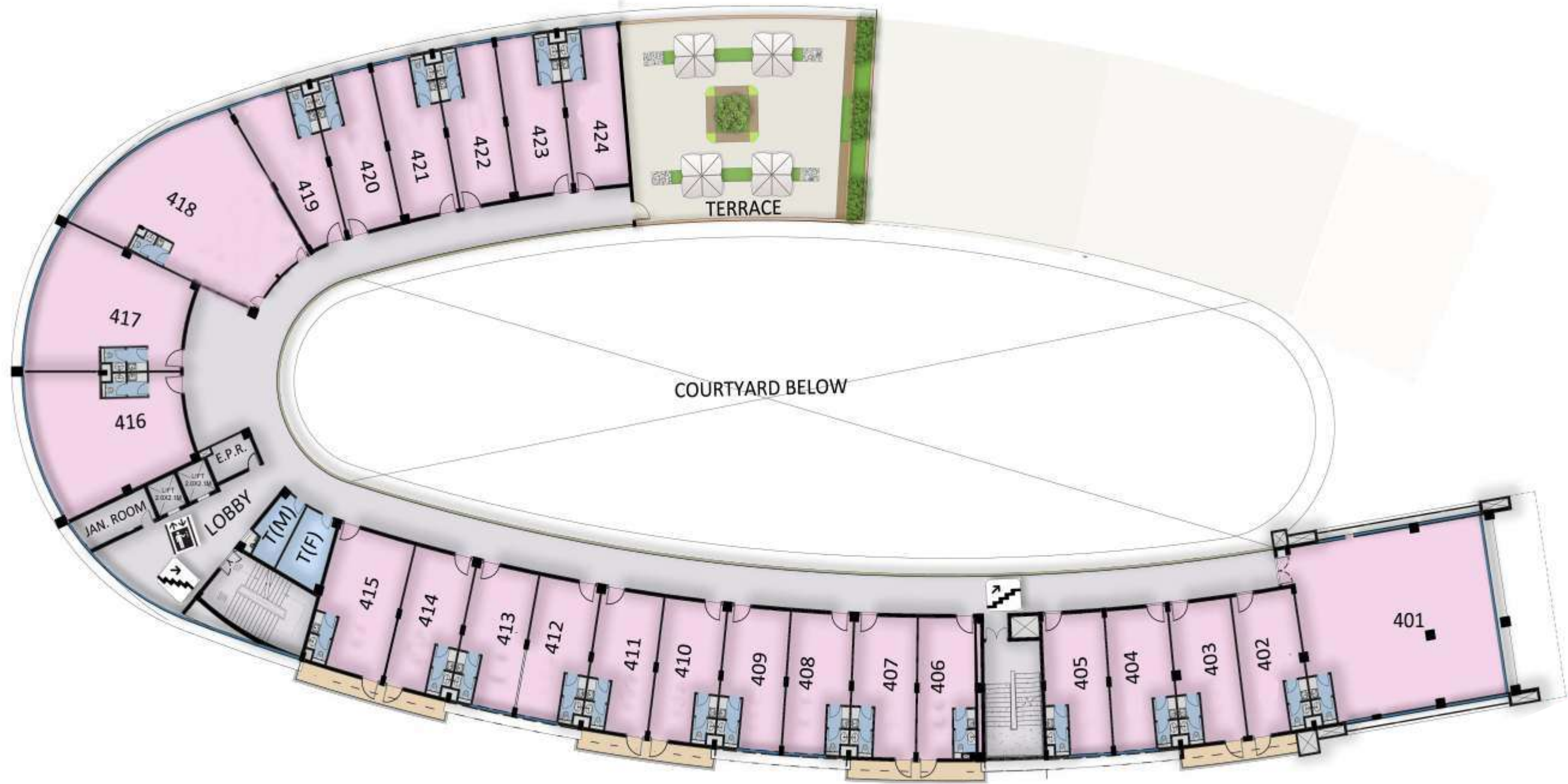


# Third Floor Plan



UNIT NO	SBA	UNIT NO	SBA	UNIT NO	SBA	UNIT NO	SBA	UNIT NO	SBA
TF-301	1988	TF-307	558	TF-313	641	TF-319	883	TF-325	575
TF-302	559	TF-308	641	TF-314	558	TF-320	575	TF-326	622
TF-303	559	TF-309	641	TF-315	716	TF-321	575	TF-327	575
TF-304	641	TF-310	558	TF-316	994	TF-322	575		
TF-305	658	TF-311	558	TF-317	980	TF-323	575		
TF-306	538	TF-312	641	TF-318	1227	TF-324	575		





UNIT NO	SBA	UNIT NO	SBA	UNIT NO	SBA	UNIT NO	SBA
FTF-401	2183	FTF-407	649	FTF-413	556	FTF-419	592
FTF-402	628	FTF-408	564	FTF-414	649	FTF-420	575
FTF-403	653	FTF-409	564	FTF-415	822	FTF-421	575
FTF-404	561	FTF-410	649	FTF-416	1159	FTF-422	575
FTF-405	582	FTF-411	649	FTF-417	1143	FTF-423	575
FTF-406	624	FTF-412	564	FTF-418	1585	FTF-424	596



# Fifth Floor Plan



UNIT NO	SBA	UNIT NO	SBA	UNIT NO	SBA	UNIT NO	SBA
501	2395	506	538	511	558	516	2650
502	559	507	558	512	641	517	964
503	559	508	641	513	641	518	1088
504	641	509	641	514	558	519	831
505	658	510	558	515	716		



# The Throbbing Heart of Commerce

**Avinash Times Square a mixed-use format development is the group's landmark project.**

- Ground & first floor would make up the lively and vibrant shopping area - called Palika Bazar and ideal for small shops of knick-knacks, restaurants, retail banking and also brand-franchisee outlets.
- 2nd, 3rd, and 4th floor will have spaces for modern offices with attached toilet & pantry facilitating that can double up as bachelor night stay.
- The 5th floor is devoted to a Business Centre with all the amenities and office-automation facilities to offer the business traveler an office away from office, complete with individual chambers ensuring privacy, meeting rooms, board rooms, conference hall, seminar hall with executive cabins, etc.

The structure is futuristically designed that lets in natural light and air. Facilities include a spectacular atrium, escalators, parking etc. This synergy makes the proposition affordable as buyers can maintain the property at a lower recurring cost.

## Facilities

- Capsule Lifts : Two 13 passenger capacity capsule lift Kone/ Otis/ Johnson
- Escalator : 1 pair of escalator connecting 1st floor from ground floor for two way movement
- Power backup for lifts, lights & all common amenities
- 24 hours security
- Modern fire fighting system
- Ladies & gents toilet on each floor
- Loan facility from all leading banks
- Earthquake resistant structure
- More than 100 car parks & two wheeler parking provision
- Tensile canopy seating's in front side of building
- Granite flooring in atrium, lift- lobby & corridors
- **Business Centre** for meeting, conference & seminars
  - Exclusive reception
  - 200 seating capacity seminar hall
  - 2 fully furnished executive director cabin
  - 2 Nos. board rooms 20 seats & 35 seats
- Mall style exterior and interior of building to suit your business needs

Clinic



Showroom



Bank



Small Shops



Super Market



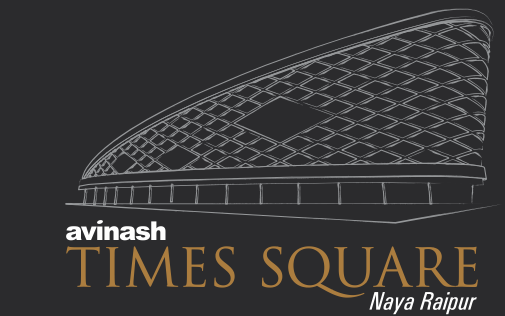
Food Court



Seminar Hall



Board Room



Reception Area



Director's Cabin





# Our ongoing projects



**Maruti Lifestyle**  
Behind Hotel Piccadily, Raipur



**Avinash Capital Homes-2**  
Behind Ambuja Mall Saddu, Raipur



**New County**  
Naya Raipur



**Maruti Solitaire**  
Shankar Nagar Raipur



**Magneto Signature Homes**  
Behind Magneto The Mall, Raipur



**Aashiyana**  
Nr. AIIMS Residences, Kabir Nagar, Raipur

# Our commercial projects



**Magneto Offizo**  
4th floor, Magneto the Mall, Raipur



**National Corporate Park**  
G.E. Road, Opp. Maruti Business Park



**Shyam Plaza**  
Pandri Main Road, Raipur



**Solitaire Plaza**  
Maruti Solitaire, Shankar Nager, Raipur



**Lifestyle Empress**  
Maruti Lifestyle, Raipur



**Logistic Park**  
Siltara, Raipur

# Work Progress in Project Actual Site Picture of Site Development June 2016

