

LIVE
WORK
PLAY

AVINASH ONE

SERVICE APARTMENT & COMMERCIAL
FLOOR PLANS



ARTIST'S IMPRESSION

AERIAL VIEW
HANDSHAKE ZONE



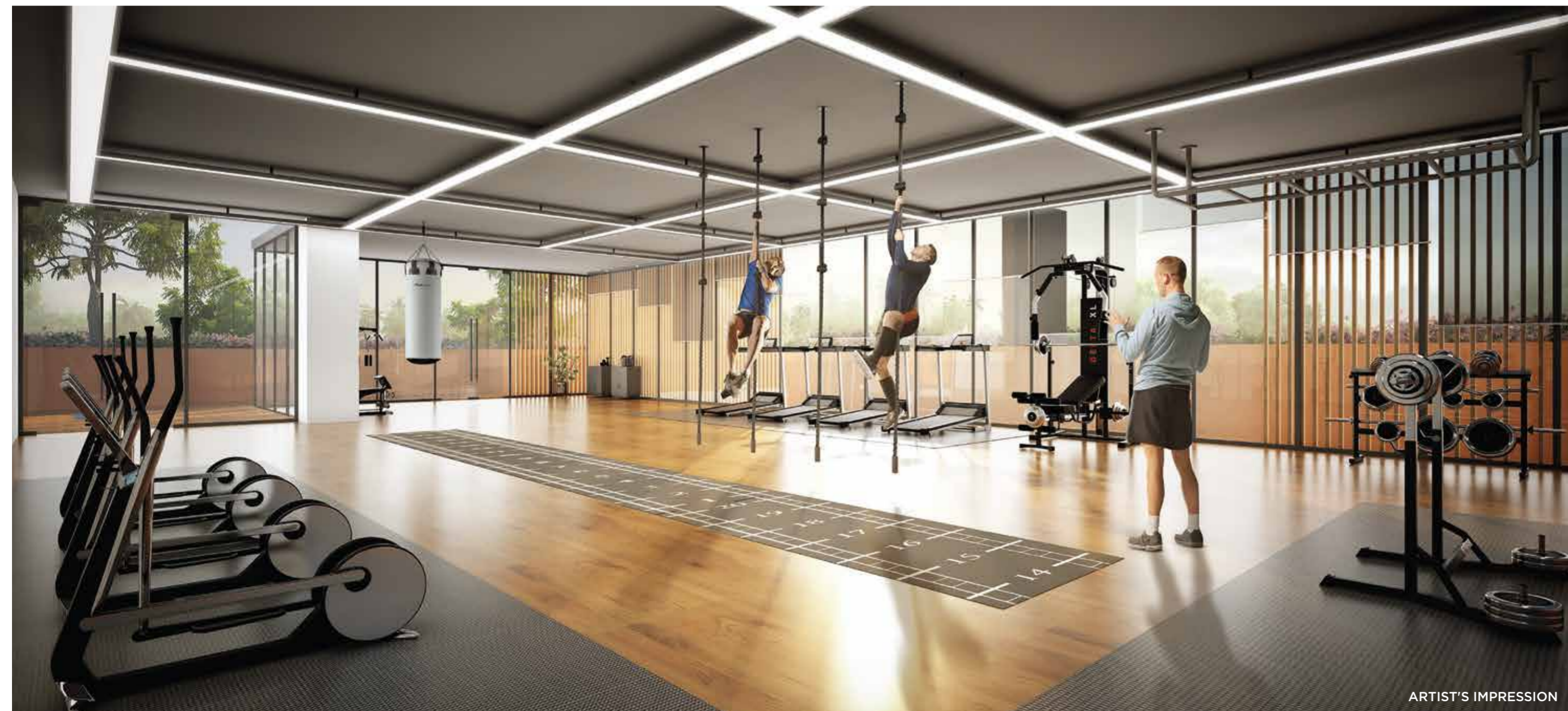
ARTIST'S IMPRESSION

MALL-CORPORATE
CLUB
HANDSHAKE ZONE



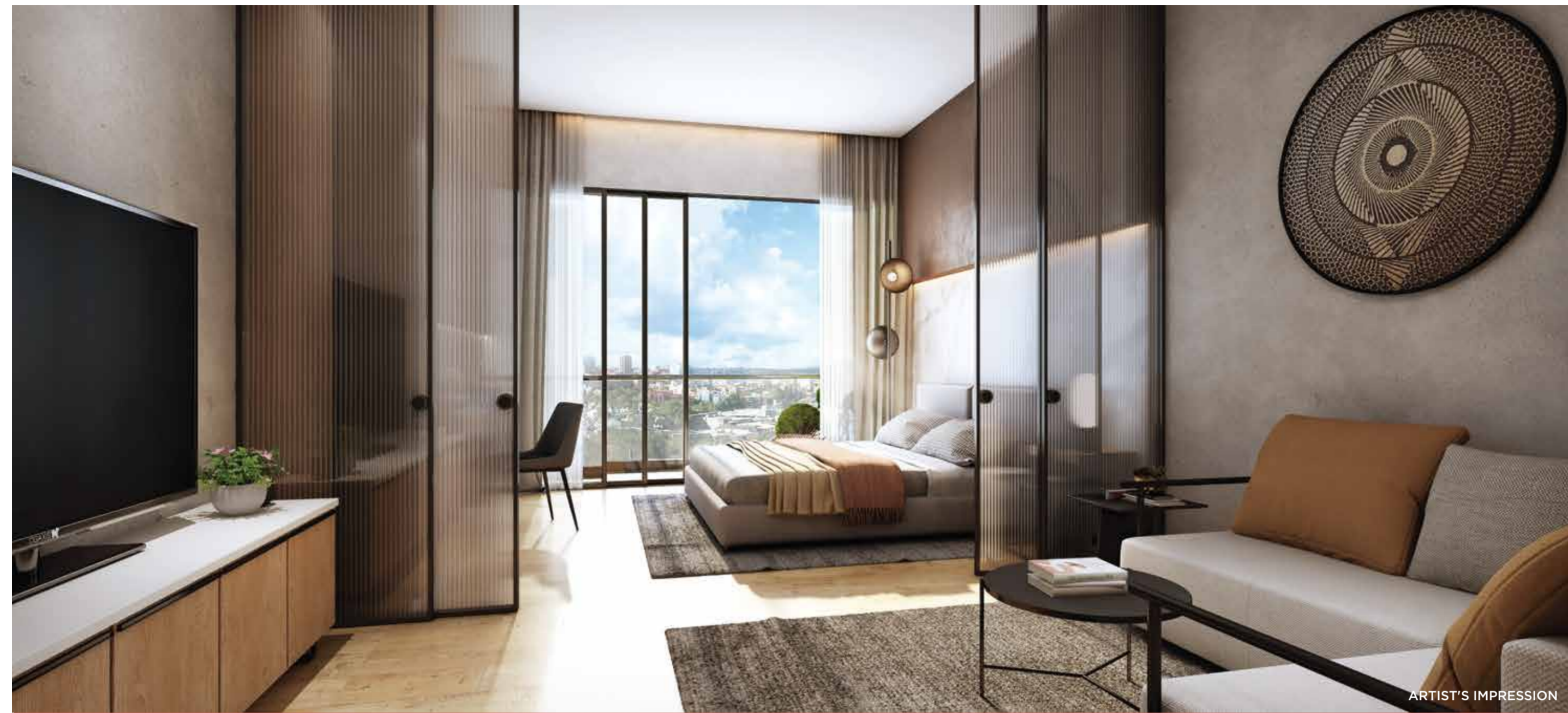
ARTIST'S IMPRESSION

SERVICE APARTMENT
SWIMMING POOL



ARTIST'S IMPRESSION

COMMERCIAL
GYMNASIUM



SERVICE APARTMENT
BEDROOM WITH
LIVING ROOM

ARTIST'S IMPRESSION



SERVICE APARTMENT
LOBBY AREA

ARTIST'S IMPRESSION

MASTER PLAN

SPECIFICATIONS OF SERVICE APARTMENT

FLOORING

Wooden flooring in bed room, foyer, kitchen & living. Anti skid tiles in balcony & wash area.

DOORS

Teak wood frame and water proof door in veneer finish with mortise lock.

WINDOWS

Three track aluminum sliding windows (Domal section or equivalent) with mosquito net.

TOILETS

(600x1200 mm) vitrified tiles in toilet, dado up to 8ft ht. on walls & (600x600 mm) vitrified tiles in floor.
Single lever diverter in shower area, & wash basin, metro flush dual flow.
Wall hangs EWC and counter top wash basin.
Geyser, exhaust fan and mirror light.

KITCHEN

Quartz/ Granite top kitchen platform with modular kitchen.

WALL FINISHES

Cement base wall putty finished with premium emulsion paint in all interior walls. Weather proof emulsion paint in exterior walls.

ELECTRICAL

Fire retardant cables and modular switches of reputed brands.

OTHER

Inverter power back-up up to 1KVA in all flats.
LPG gas pipe line facility in all flats.

FURNITURE

Bed with side table, wardrobe single, 2+1 unit sofa, study table, TV unit in living, 3 nos chair, corner table + coffee table.

KITCHEN APPLIANCE

RO, chimney, microwave.

ELECTRONIC APPLIANCES

42" TV, refrigerator, study lamps, lighting fixture, air conditioner.

AMENITIES

ULTRA MODERN GYM

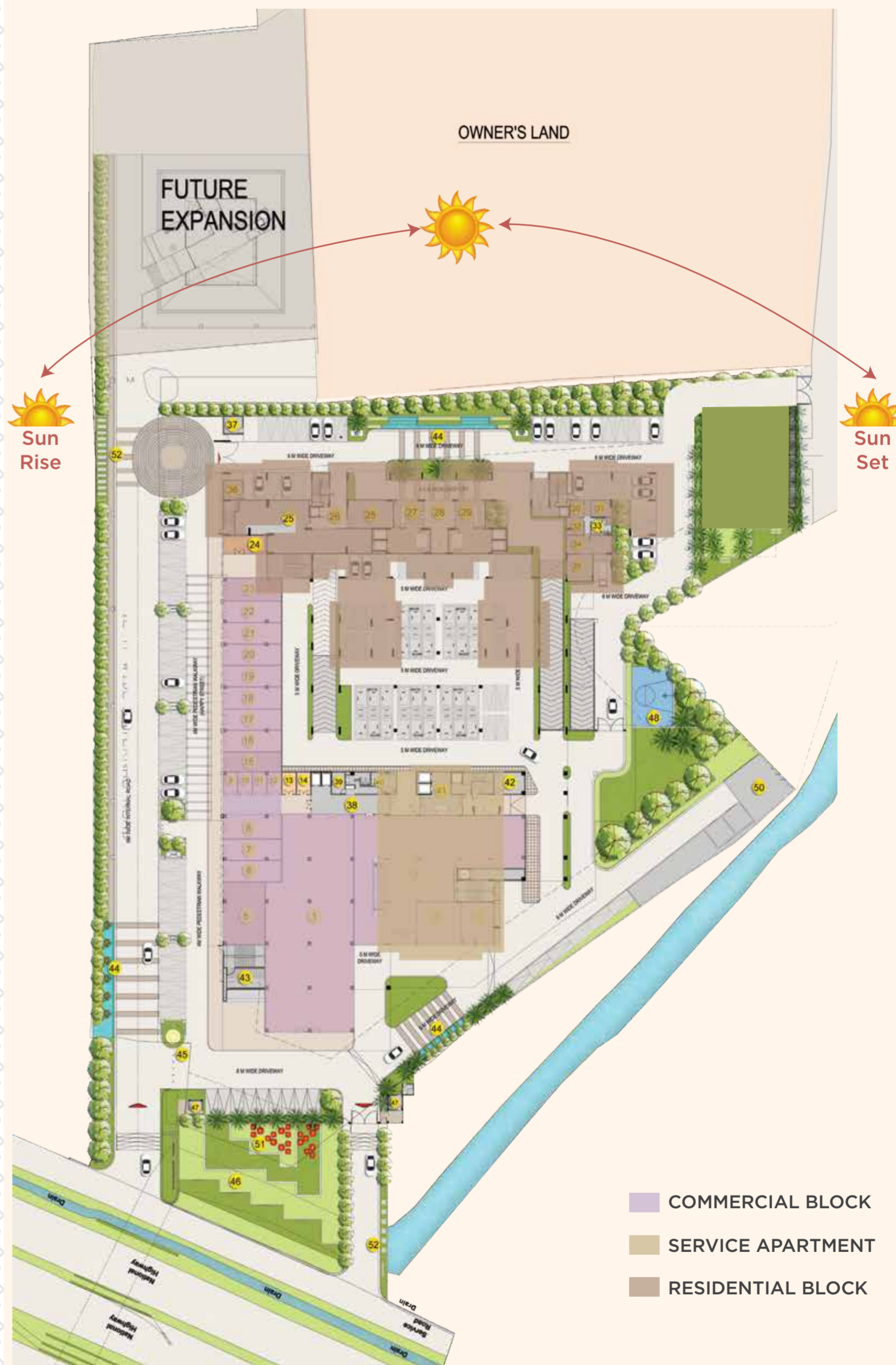
SWIMMING POOL

RECEPTION & LOBBY

SPA

BOARD ROOMS

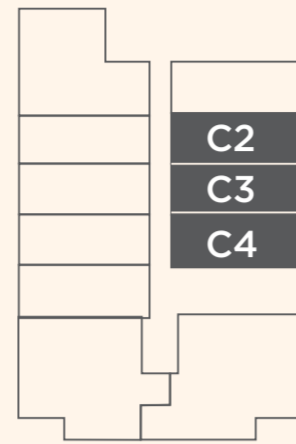
SITOUT LOUNGE



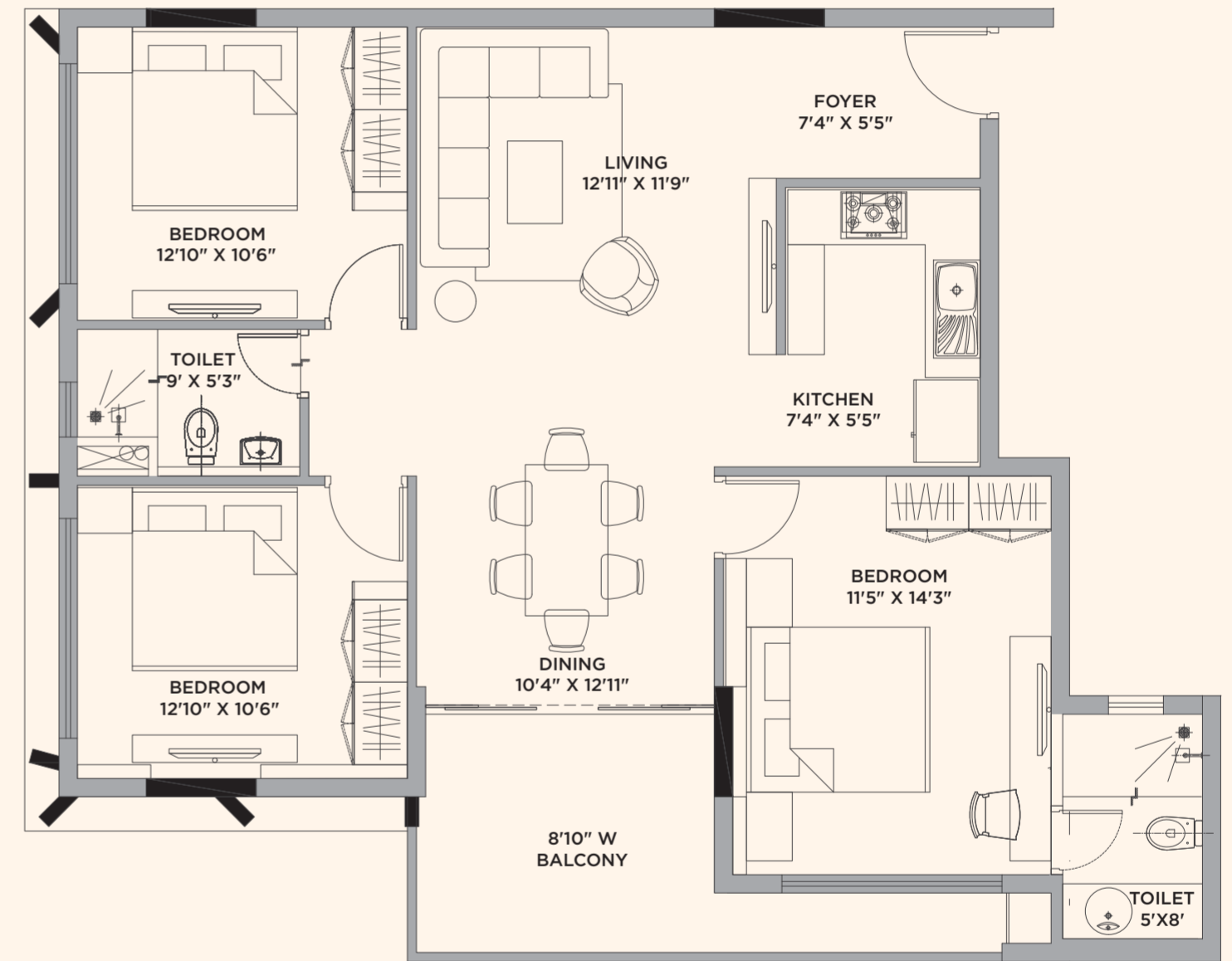
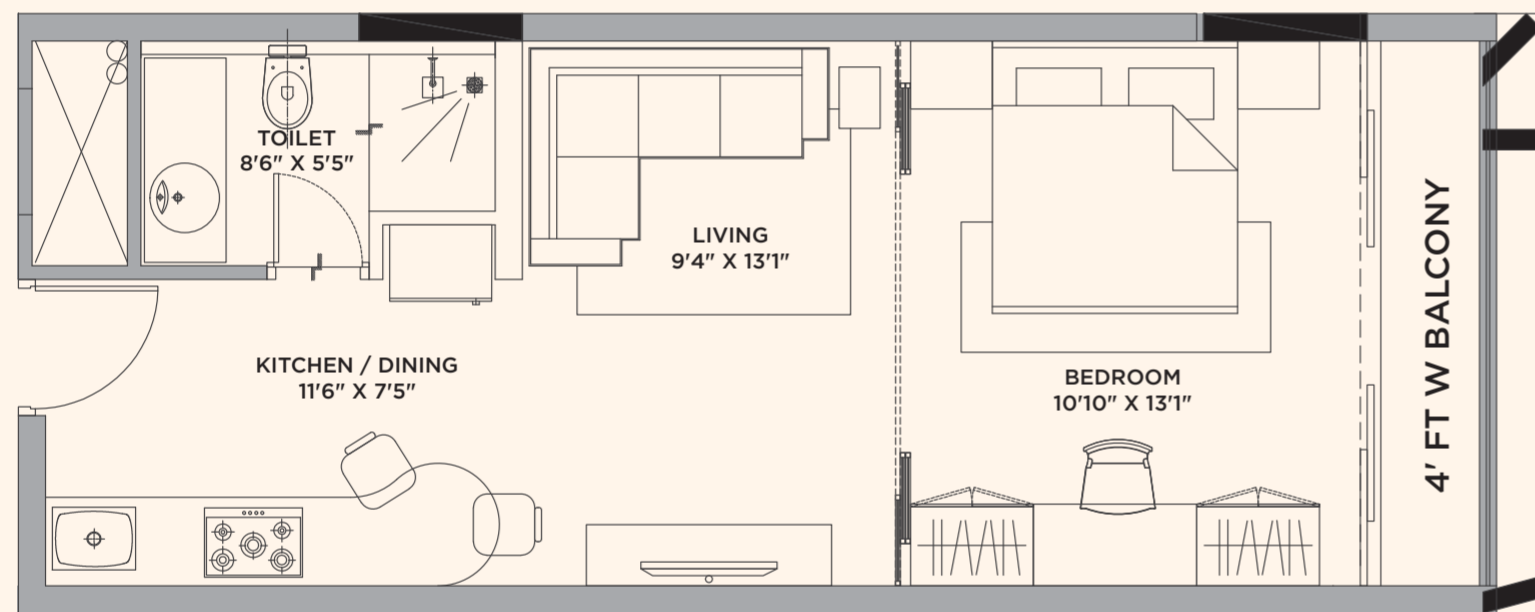
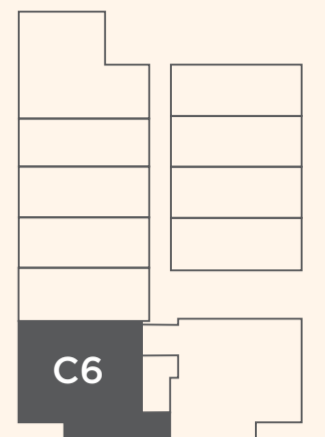
- COMMERCIAL BLOCK
- SERVICE APARTMENT
- RESIDENTIAL BLOCK



**TYPICAL UNIT PLAN
C2,C3,C4 (1BR)**



**UNIT PLAN
C6 (3BHK)**

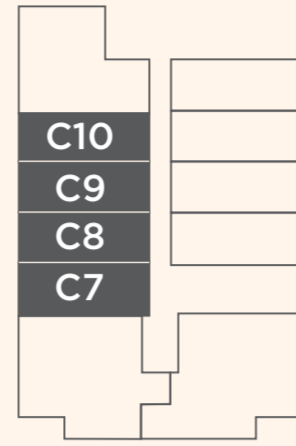


FLAT NO.	TYPE	CARPET AREA	BALCONY	RERA AREA	SBA	UNIT
C-2,3,4	1BR	405	37	442	650	SQFT

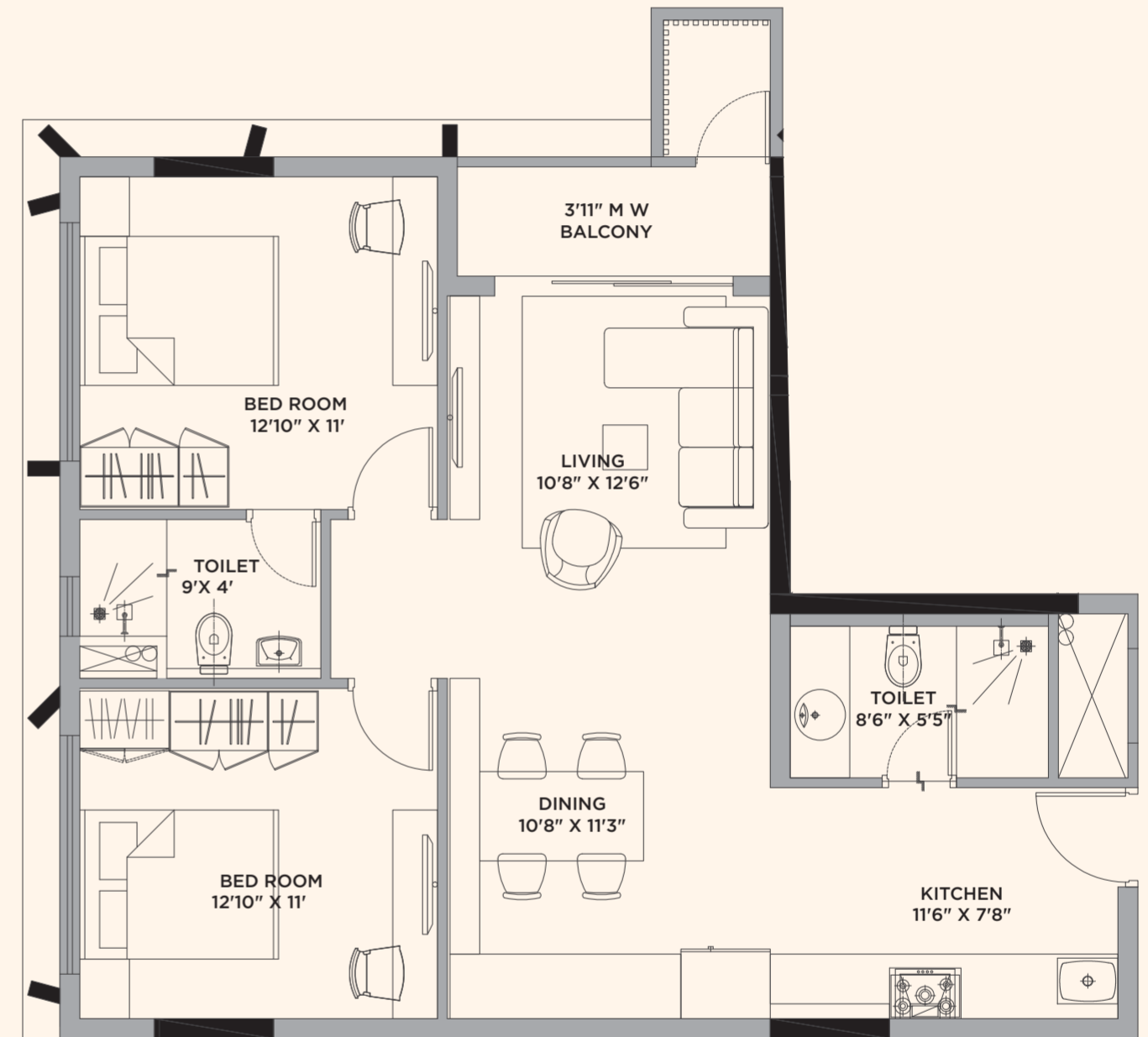
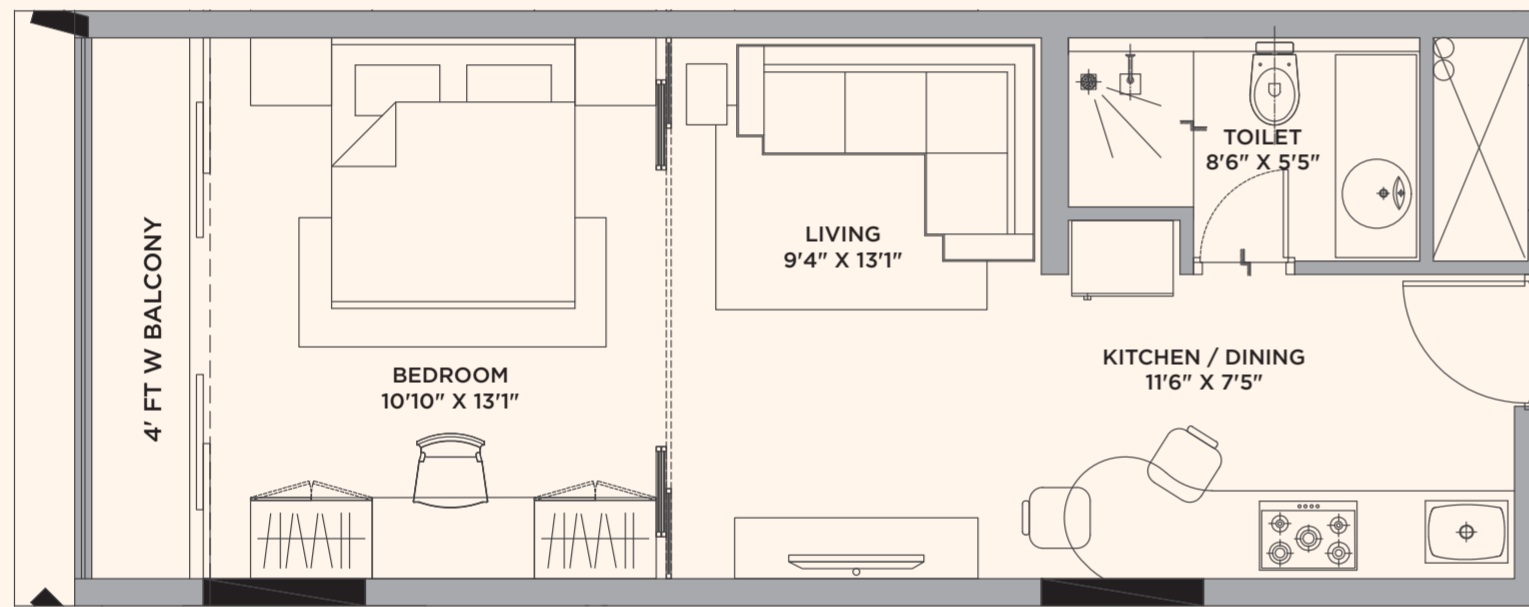
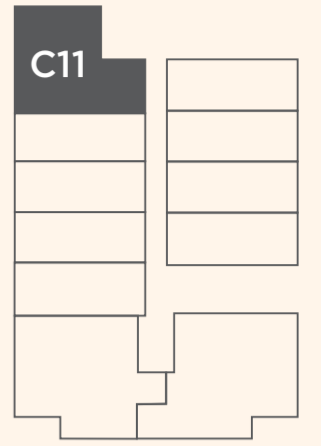
FLAT NO.	TYPE	CARPET AREA	BALCONY	RERA AREA	SBA	UNIT
C-6	3BHK	980	112	1092	1650	SQFT



**TYPICAL UNIT PLAN
C7,C8,C9,C10 (1BR)**



**UNIT PLAN
C11 (2BHK)**



FLAT NO.	TYPE	CARPET AREA	BALCONY	RERA AREA	SBA	UNIT
C-7,8,9,10	1BR	405	37	442	650	SQFT

FLAT NO.	TYPE	CARPET AREA	BALCONY	RERA AREA	SBA	UNIT
C-11	2BHK	756	53	809	1150	SQFT





ARTIST'S IMPRESSION

RETAIL SIDE
NIGHT VIEW



ARTIST'S IMPRESSION

DOUBLE HEIGHT
HAPPY STREET
INTERACTIVE ZONE



ARTIST'S IMPRESSION

HAPPY STREET WITH
FOOD OUTLETS



ARTIST'S IMPRESSION

BOUTIQUE OFFICE
SPACE

COMMERCIAL FLOOR PLANS

GROUND FLOOR PLAN



27	Residential Tower A Lobby
28	Residential Foyer (South Tower)
29	Residential Tower B Lobby
37	Residential Gas Bank
38	Commercial Lobby
41	Service Apartment Lobby (North Tower)
44	Water Feature
46	Canal Front Landscape
48	Basketball Court
51	Informal Seating
52	Sculpture

SL. No.	Space	Size Sqft	Carpet Area	Semi Covered Sqft	SBA Sqft
1	Anchor Retail 01		7470		10589
2	Anchor Retail 02		6152		8891
3	Prime Retail G01	28'4" X 27'6"	782		1136
4	Prime Retail G02	20' X 27'6"	552		829
5	Cafe G01	26'8" X 39'7"	1066	398	1934
6	Retail G01	37'6" X 12'11"	490	136	862
7	Retail G02	37'6" X 12'11"	490	136	862
8	Retail G03	37'6" X 15'5"	582	136	975
9	Retail G04	8'4" X 14'7"	121		193
10	Retail G05	8'9" X 14'7"	127		196
11	Retail G06	8'9" X 14'7"	127		196
12	Retail G07	8'9" X 14'7"	127		196
13	Retail G08	8'9" X 14'7"	127		196
14	Retail G09	8'9" X 14'7"	127		196
15	Restaurant G13	37'6" X 12'6"	462	128	821
16	Retail G14	37'6" X 12'11"	487	136	868
17	Retail G15	37'6" X 12'11"	487	136	868
18	Retail G16	37'6" X 12'11"	487	136	868
19	Retail G17	37'6" X 12'11"	487	136	868
20	Retail G18	37'6" X 12'11"	487	136	868
21	Retail G19	37'6" X 12'11"	487	136	868
22	Retail G20	37'6" X 12'11"	487	136	868
23	Restaurant G21	37'6" X 14'2"	530	136	942
24	Cafe G22	27'11" X 11'8"	329	116	597



FIRST FLOOR PLAN



Sl. No.	Space	Size Sqft	Carpet Area Sqft	Semi Covered Sqft	SBA Sqft
1	Anchor Retail 02 (Upper Level)	165'8" X 96'2"	13045		18673.20
2	F & B - 01	52'6" X 56'9"	2235		3310.86
3	Retail 101	13'9" X 29'2"	405		593.74
4	Retail 102	12'11" X 29'2"	385		578.62
5	Retail 102a	39'2" X 12'6"	495	268	976.27
6	Food Retail 103	40'5" X 15'	595	314	1168.97
7	Food Retail 104	40'5" X 12'11"	529	288	1077.50
8	Retail 105	40'5" X 12'11"	529	288	1077.50
9	Retail 106	40'5" X 12'11"	529	288	1077.50
10	Retail 107	40'5" X 12'11"	529	288	1077.50
11	Retail 108	40'5" X 12'11"	529	288	1077.50
12	Retail 109	40'5" X 12'11"	529	288	1077.50
13	Retail 110	40'5" X 12'11"	529	288	1077.50
14	Food Retail 111	40'5" X 14'2"	571	304	1154.29

SECOND FLOOR PLAN



Sl. No.	Space	Size Sqft	Carpet Area Sqft	Alfresco Terrace/Balcony Sqft	SBA Sqft
1	F&B 02		5020	642.72	7868
2	F&B 03		2765	1495.77	5496
3	F&B 04		2094	572.64	3580
4	Office 201	45'10"x12'11"	589	83.31	1017
5	Office 202	45'10"x12'11"	589	80.41	993
6	Office 203	45'10"x14'2"	638	87.62	1070
7	Office 204	45'10"x12'11"	589	80.41	993
8	Office 205	45'10"x12'11"	589	80.41	993
9	Office 206	45'10"x12'11"	589	80.41	993
10	Office 207	45'10"x12'11"	589	80.41	993
11	Office 208	45'10"x12'11"	589	80.41	993
12	Office 209	45'10"x12'11"	589	80.41	993
13	Office 210	45'10"x12'11"	589	80.41	993
14	Office 211	45'10"x14'2"	638	90.42	1106



THIRD FLOOR PLAN



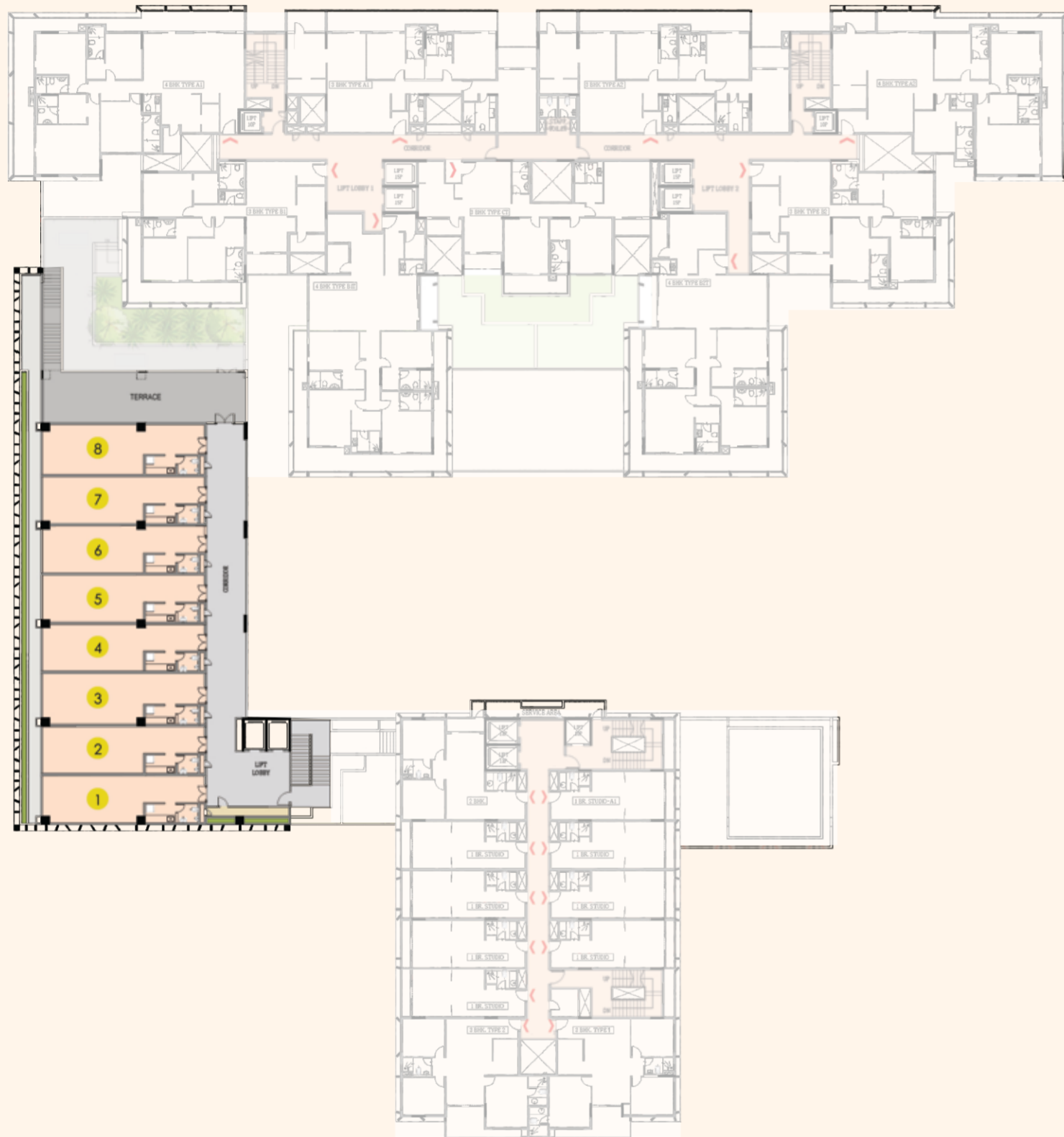
Sl. No.	Space	Size Sqft	Carpet Area Sqft	Alfresco Terrace/ Balcony Sqft	SBA Sqft
46	Office 301	45'10"x12'11"	589	83	1017
47	Office 302	45'10"x12'11"	589	80	993
48	Office 303	45'10"x14'2"	638	80	1070
49	Office 304	45'10"x12'11"	589	80	993
50	Office 305	45'10"x12'11"	589	80	993
51	Office 306	45'10"x12'11"	589	80	993
52	Office 307	45'10"x12'11"	589	80	993
53	Office 308	45'10"x12'11"	589	80	993
54	Office 309	45'10"x12'11"	589	80	993
55	Office 310	45'10"x12'11"	589	80	993
56	Office 311	45'10"x12'11"	589	80	993
28	F&B 05		1941	807	3617
38	SPA		939	168	1556
38	Gymnasium		2246	742	3926

FOURTH FLOOR PLAN



Sl. No.	Space	Size Sqft	Carpet Area Sqft	Alfresco Terrace/ Balcony Sqft	SBA Sqft
3	Office 401	45'10"x12'11"	589	83.31	1017
4	Office 402	45'10"x12'11"	589	80.41	993
5	Office 403	45'10"x14'2"	638	87.62	1070
6	Office 404	45'10"x12'11"	589	80.41	993
7	Office 405	45'10"x12'11"	589	80.41	993
8	Office 406	45'10"x12'11"	589	80.41	993
9	Office 407	45'10"x12'11"	589	80.41	993
1	Office 408	45'10"x12'11"	589	80.41	993
11	Office 409	45'10"x14'8"	661	80.41	1002
15	F&B 06	46'3"x35'10"	1671		2432

FIFTH FLOOR PLAN





EXPERIENCE
ONE WORLD!

Sl. No.	Space	Size Sqft	Carpet Area Sqft	Alfresco Terrace/Balcony Sqft	SBA Sqft
1	Office 501	45'10"x12'11"	589	83.31	1017
2	Office 502	45'10"x12'11"	589	80.41	993
3	Office 503	45'10"x14'2"	638	87.62	1070
4	Office 504	45'10"x12'11"	589	80.41	993
5	Office 505	45'10"x12'11"	589	80.41	993
6	Office 506	45'10"x12'11"	589	80.41	993
7	Office 507	45'10"x12'11"	589	80.41	993
8	Office 508	45'10"x13'11"	622	80.41	1061





 **Site address:** Avinash One, Opposite Avinash Magneto Mall, Raipur, C.G.

 **Corporate Address:** Avinash House, Maruti Business Park, G.E. Road, Raipur, Chhattisgarh 492 001

 **81090 09181/99075 88444**  **www.avinashgroup.com**  **sales.aone@avinashgroup.com**



PCGRERA260721001237

DISCLAIMER:

This is not a legal document. The plans and photographs are subject to change. The actual product may vary according to the sole discretion of the developer. No claims shall be entertained by the developer depending on this material. Though the contents of the floor plans brochure have been compiled with the intention to provide information to the best of our knowledge, there may be some changes from time to time which may not reflect on the floor plan brochure. While enough care is taken by the developer to ensure that the information on the floor plans brochure is up to date and accurate, the users are advised to verify designs, plans, specifications, facilities, features, etc. with our team.